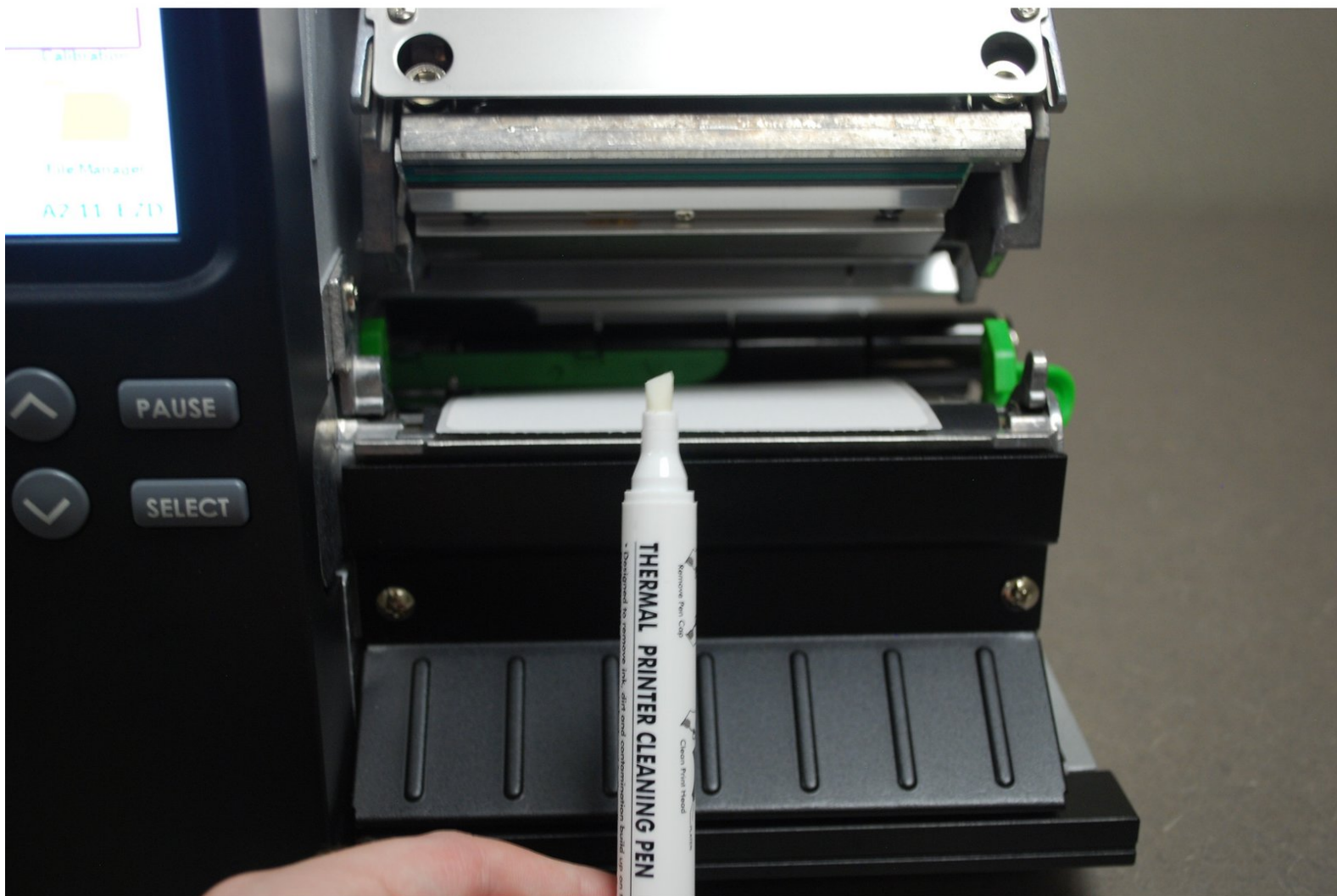




09 - How to Clean Printhead

How to clean the print head using a printhead cleaning pen

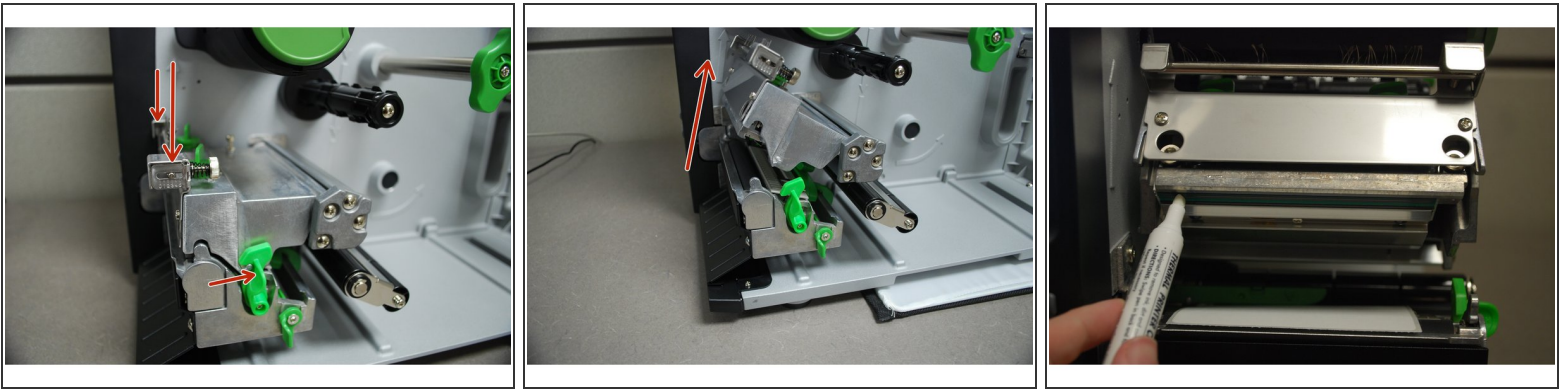
Written By: Ian Savitch



INTRODUCTION

Make sure to turn off the printer before beginning the cleaning process

Step 1 — Cleaning the Printhead with a Cleaning Pen



- Make sure the printer is turned off, then open the over, lifting gently until it rests on top of the printer.
 - Press down on the top of the print head, and push the green release lever to the side until it unlatches.
 - Lift the print head up.
 - Uncap the cleaning pen and use the tip to clean the glass surface of the print head, ensuring there is no label or ribbon residue, or dust or other particulate.
- ① *You should do this each time you go through a roll of labels to ensure optimal print quality and performance. Doing so regularly can extend the lifespan of your printer by 2 to 3 times.*