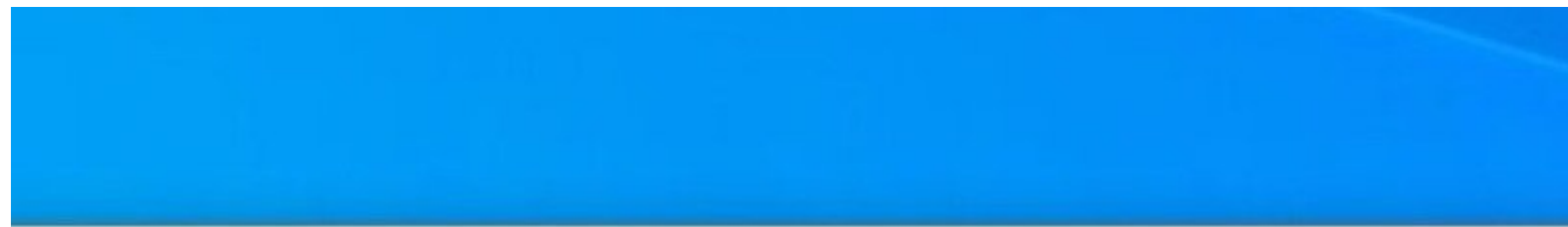




# 10 - Load the Printer Drivers

How to install the drivers for the GSS desktop label printer.

Written By: Eric Sutter



ull Driver Wizard



## Welcome to the Seagull Driver Wizard

This wizard helps you install and remove printer drivers.

What would you like to do?

- ☒ Install printer drivers
- ☐ Upgrade printer drivers
- ☐ Remove printer drivers

---

## INTRODUCTION

This guide will show you how to install the drivers necessary for your GSS Desktop Printer to operate correctly.

Click [here](#). to download the driver installer.

### Bar Code Printer LP244C

---



#### TOOLS:

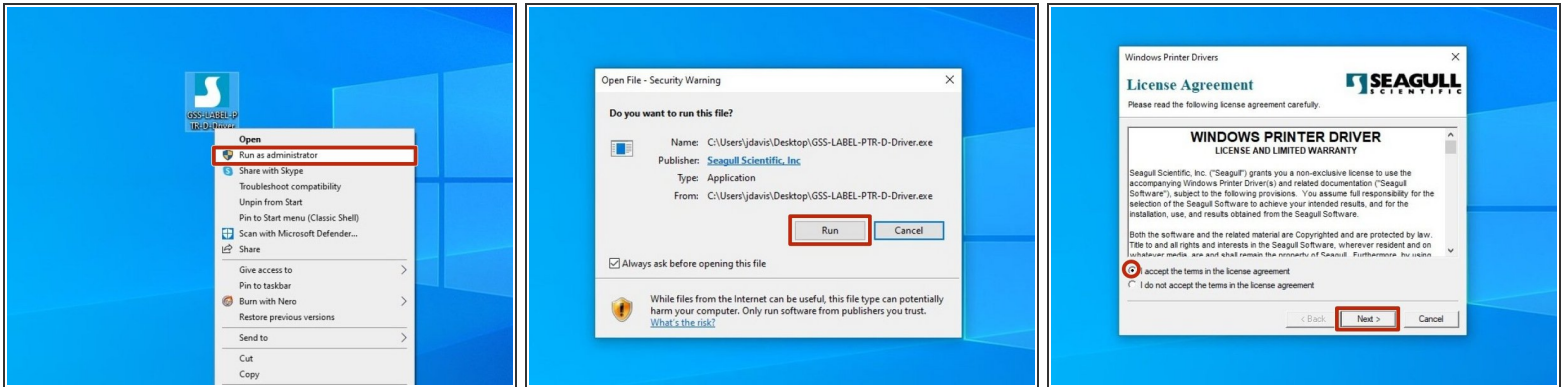
- [Admin Privileges](#) (1)
-

## Step 1 — Choose Method



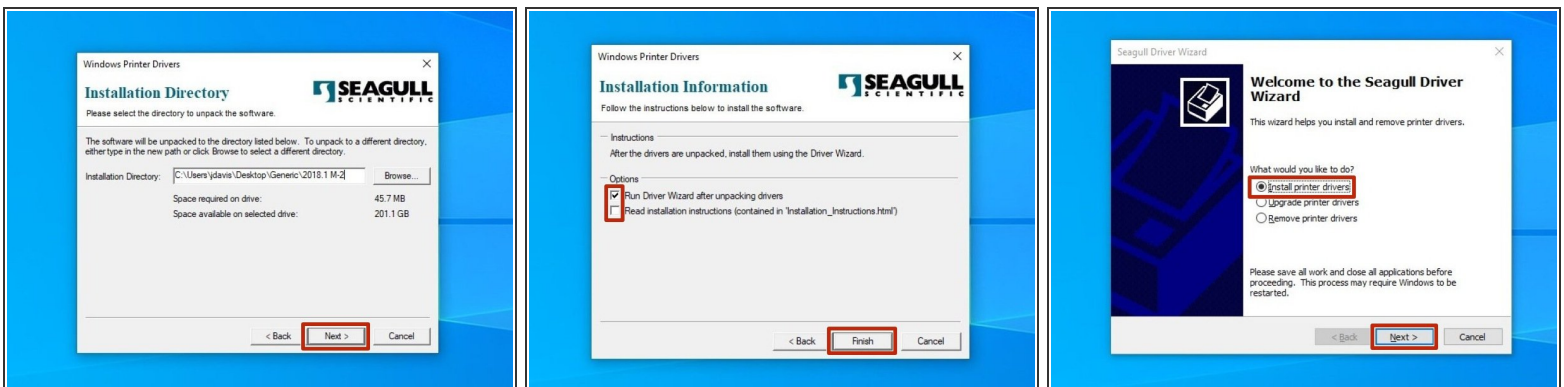
- This guide shows how to install the printer drivers in two way: via USB cable, while the printer has a direct wired connection to your PC; via the network, when the printer is connected to the same network as your PC via ethernet cable.
- If your desktop printer is connected by USB, go to [Step 2](#).
- If your printer is connected to the network, go to [Step 6](#).
- To print a test page from the installed driver, go to [Step 13](#)

## Step 2 — Via USB Pt.1



- ❶ *Before running the driver program, please make sure you have connected the printer using the USB cable provided.*
- After downloading the driver program, find and right click on it, and choose "Run as Administrator."
- If the Security Warning window opens, click "Run" to run the program.
- Review the EULA. If you agree to the terms of use, select the appropriate response and press the "Next" button.

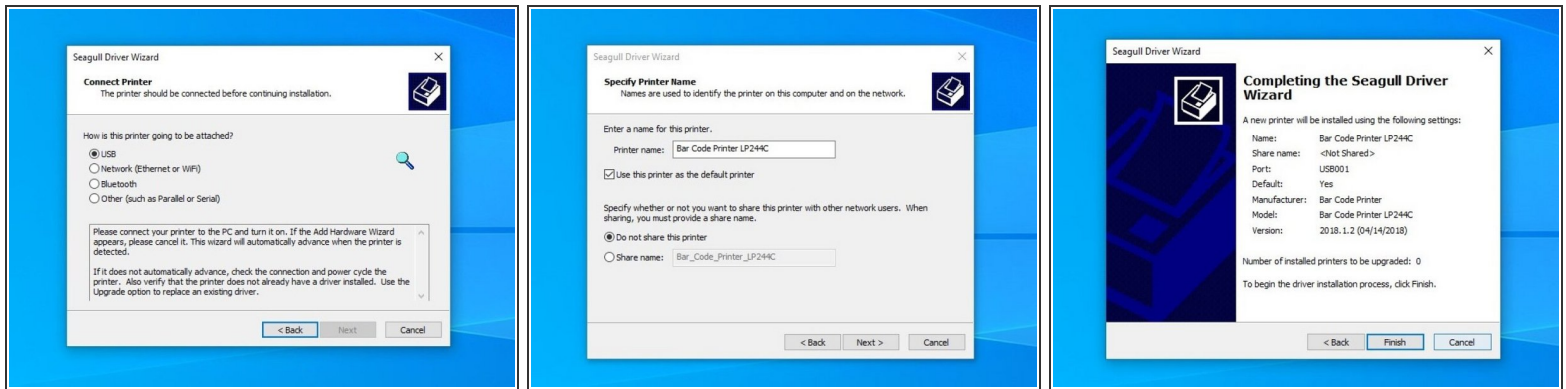
## Step 3 — Via USB Pt.2



- Review the Installation Destination and change the location if desired. Click "Next" to continue.
- Choose "Run Driver Wizard..."; the second option is unnecessary. The select "Finish."
- After installation is completed, the Driver Wizard will start. Choose the option to "Install Printer Drivers" and click "Next."

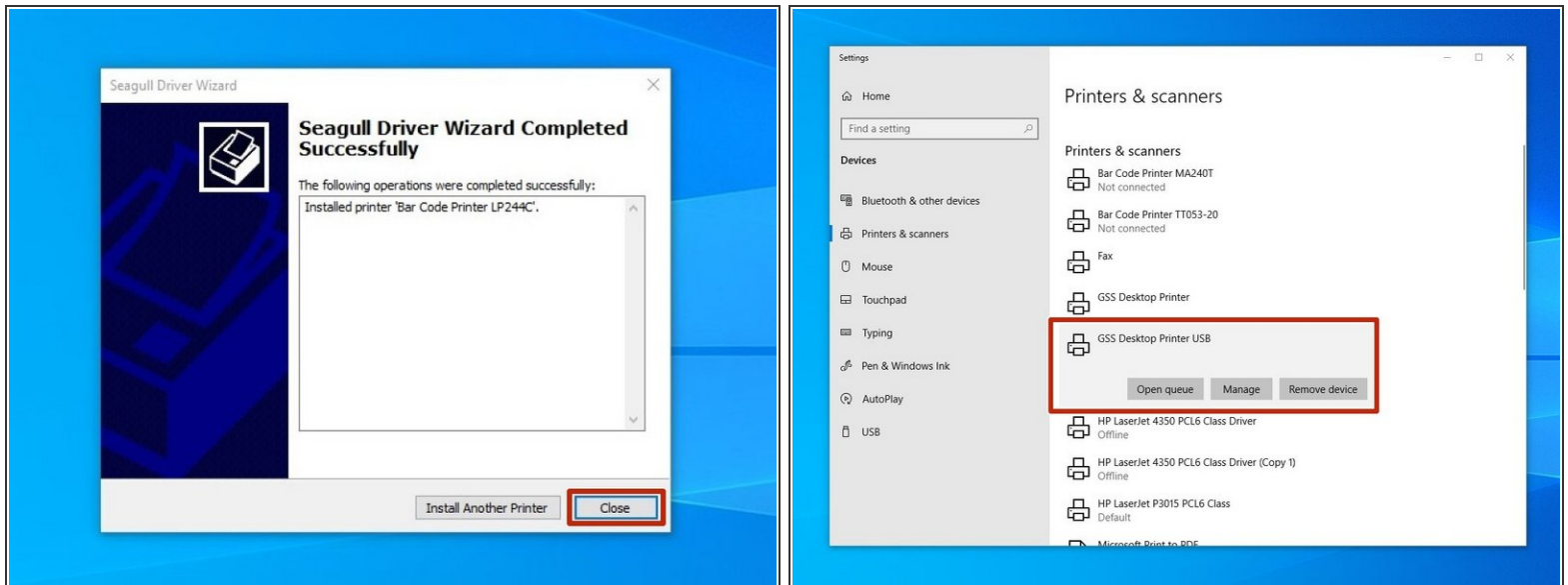
This document was generated on 2024-05-17 01:32:53 AM (MST).

## Step 4 — Via USB Pt.3



- If you have connected the printer via USB prior to downloading and installing the drivers, your computer will automatically detect the printer. Click "Next" to continue.
  - ❗ *If you did not connect the printer prior to installation, close the program, connect the printer, and re run the program from the location you saved it to restart the process.*
- There are some things that can be customized before installation of the driver. You can choose to rename the printer (Orange), check it as the Default printer (Green), and make it visible on your network through your computer (Yellow). Hit "Next" when you've made your choices.
  - ✎ For standard setup, we recommend against changing these settings from their default. If you know what you're doing, adjust these options as you please.
- Confirm setup options before pressing "Finish." If anything needs to be changed, press "Back."
  - ❗ *You may receive a Security Warning from Windows. If you do, choose the option to "Install."*

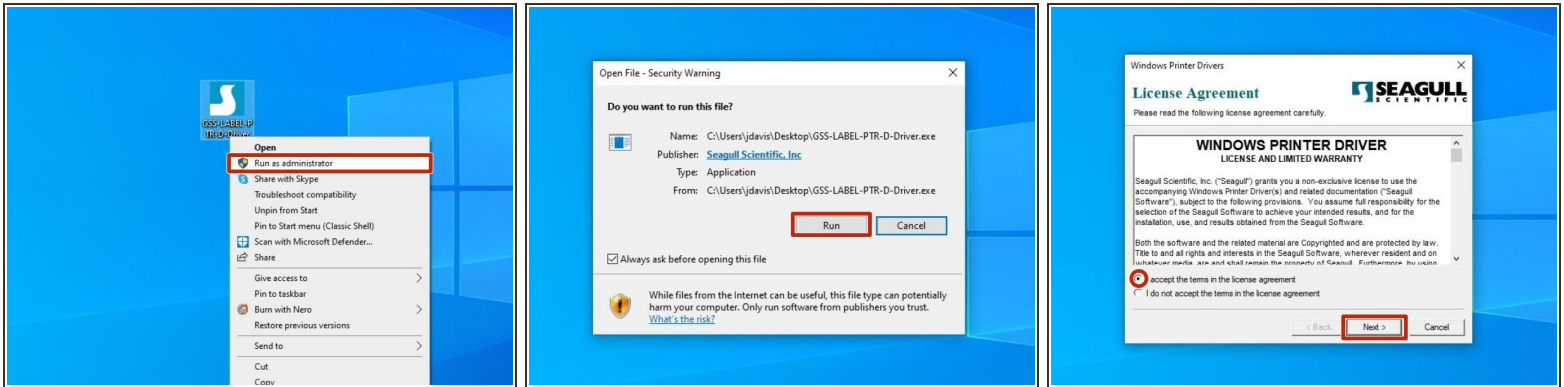
## Step 5 — Via USB Pt.4



- Once installation has been completed, hit the "Close" button.
- Check your Printers & Scanners in Windows to verify setup has been completed - you should a printer with a name matching the one you just set up.
- Go to [Step 13](#) to print a test page from the driver.

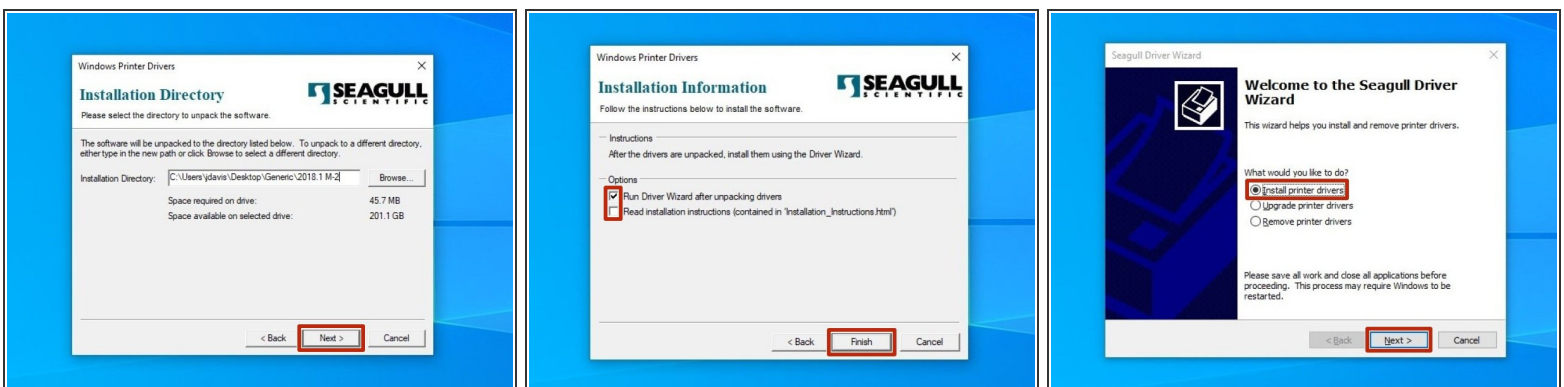


## Step 6 — Via Network Pt.1



- i** Steps 6-11 explain how to install drivers for a printer connected to your PC over the network. If your printer is plugged directly into your computer, please see steps 2-5.
- After downloading the driver program, find and right click the program, and choose "Run as Administrator."
  - If you receive a Security Warning, click "Run" to run the program.
  - Review the EULA. If you agree to the terms of use, select the appropriate response and press the "Next" button.

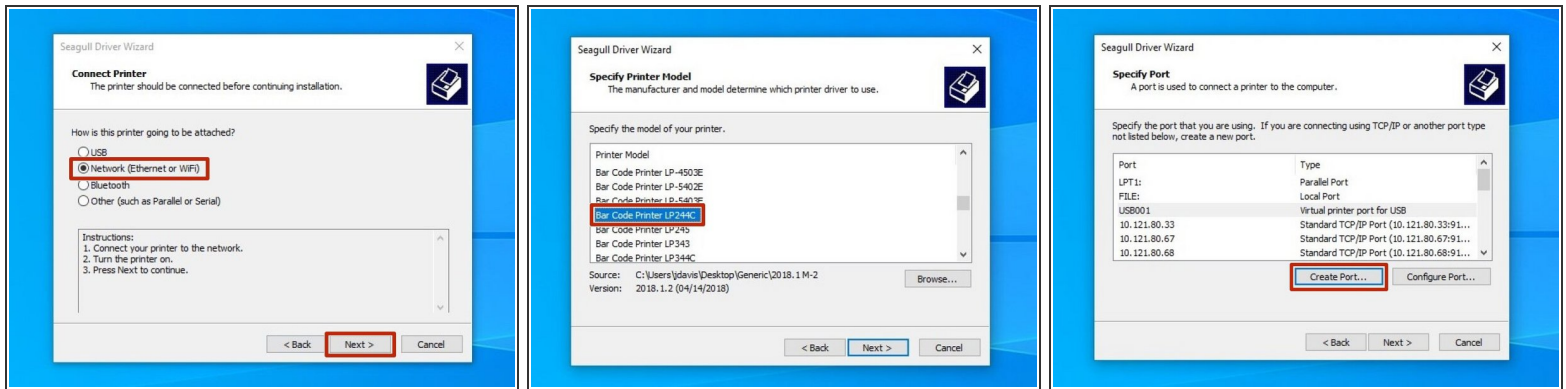
## Step 7 — Via Network Pt.2



- Review the Installation Destination and change the location, if desired. Click "Next" to continue.
- Choose to "Run Driver Wizard..."; the second option is unnecessary. Then select "Finish."
- After installation is completed, the Driver Wizard will start. Choose the option to "Install printer drivers" and click "Next."

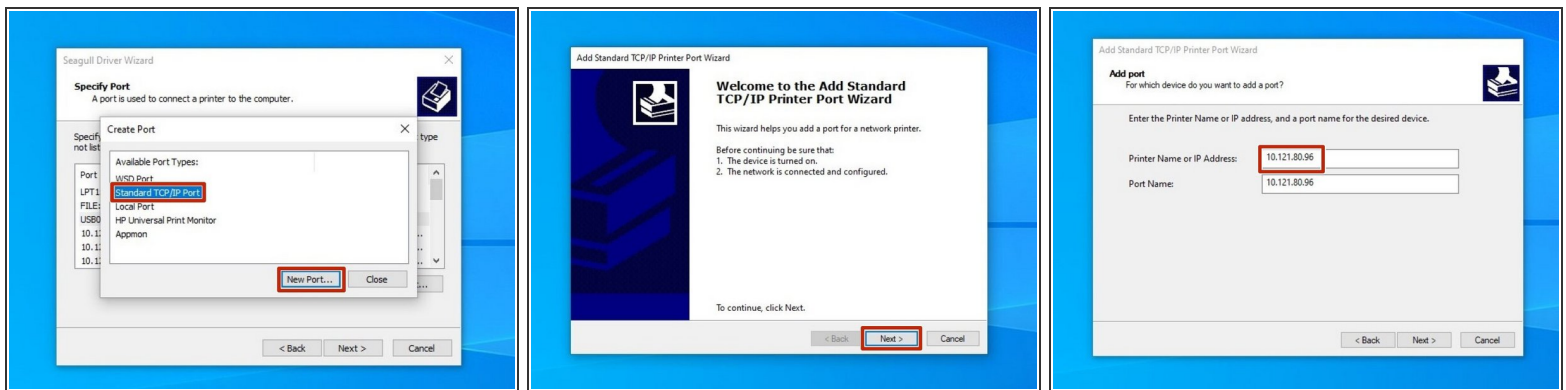
This document was generated on 2024-05-17 01:32:53 AM (MST).

## Step 8 — Via Network Pt.3



- Choose the option for "Network (Ethernet or WiFi)," then click the "Next" button.
- Scroll down until you find the printer model "**Bar Code Printer LP244C.**" Click on it, and while it is highlighted, click the "Next" button.
- Select the option to create a port.

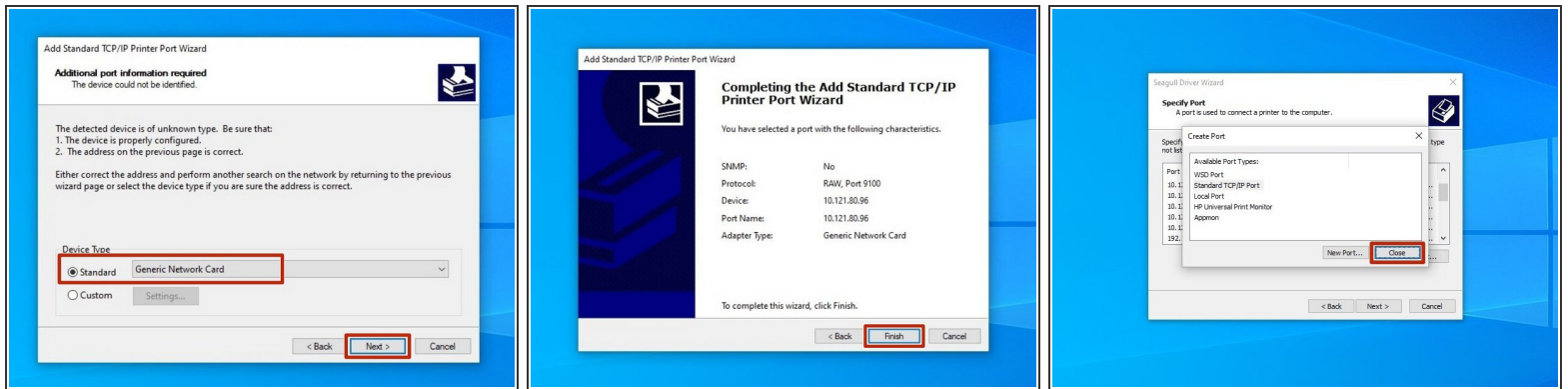
## Step 9 — Via Network Pt.4



- Select "Standard ICP/IP Port," and then click "New Port."
- Make sure the printer is turned on, connected to the network, and configured, then select "Next." See the general set up guide [\[link\]](#) and the guide to Assign an IP [\[link\]](#).
- For the IP Address, enter the IP that you set for your printer.

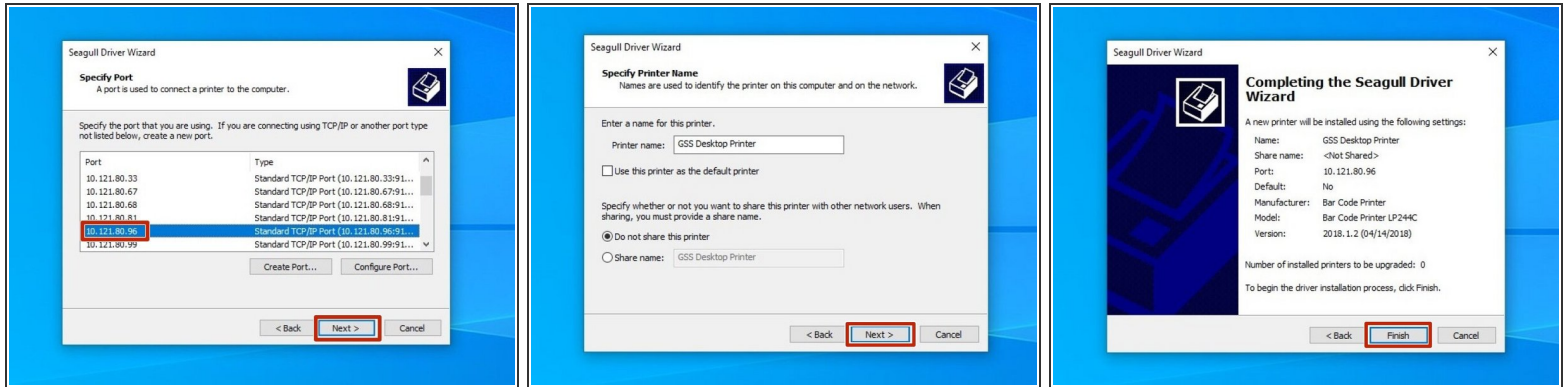


## Step 10 — Via Network Pt.5



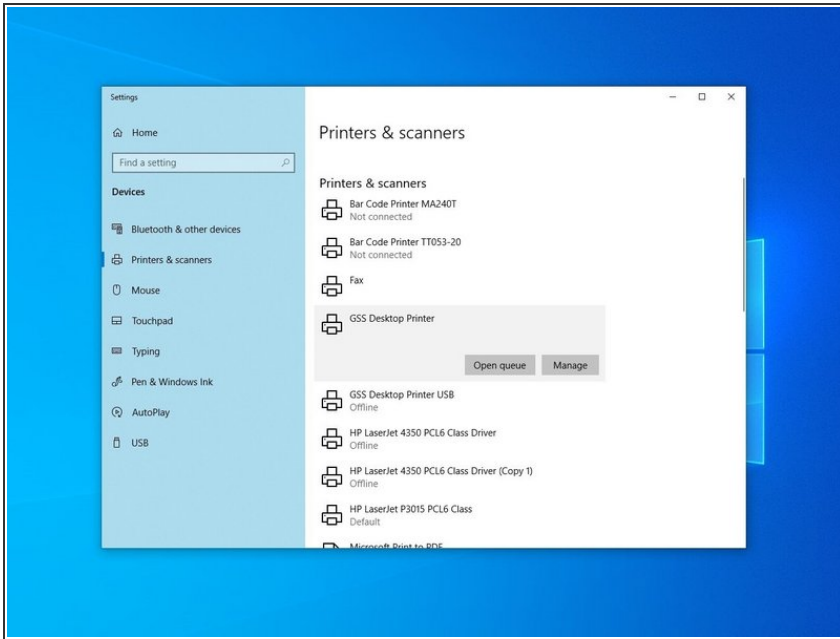
- Select the option for "Standard" device type, and from the dropdown select "Generic Network Card." Once it's selected, hit the "Next" button.
- Review the selections, then hit "Finish."
- Once the wizard finishes and closes, click "Close" to close the "Create Port" window as well.

## Step 11 — Via Network Pt.6



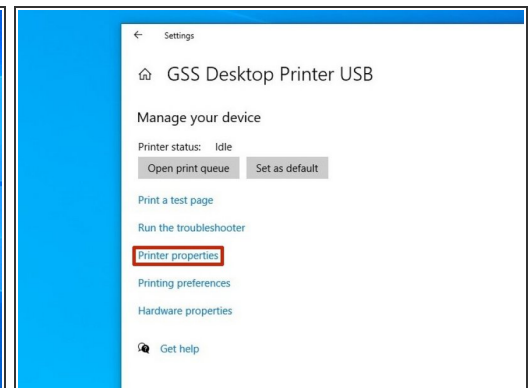
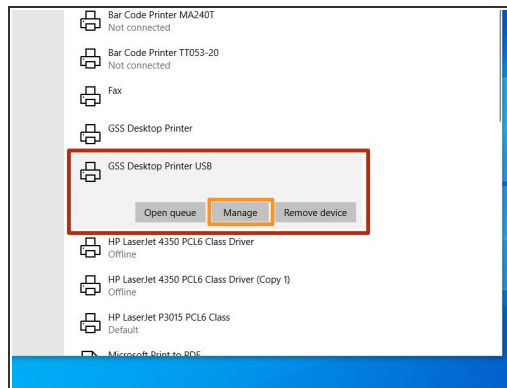
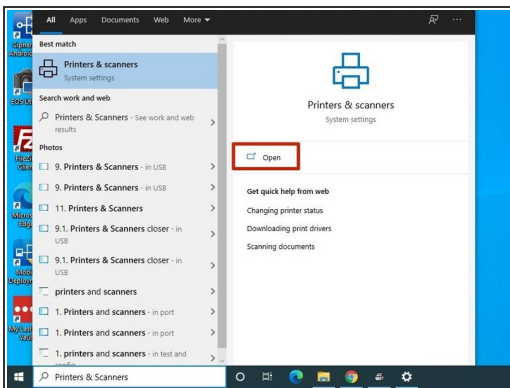
- Select the new port you just made, and hit "Next."
  - There are some things that can be customized before installation of the driver. You can choose to rename the printer (Orange), check it as the Default printer (Green), and make it visible on your network through your computer (Yellow). Hit "Next" when you've made your choices.
    - ☒ For standard setup, we recommend against changing these settings from their default. If you know what you're doing, adjust these options as you please.
  - Confirm setup options before pressing "Finish." If anything needs to be changed, press "Back."
- ❗ *You may receive a Security Warning from Windows. If you do, choose the options to "Install."*

## Step 12 — Via Network Pt.7



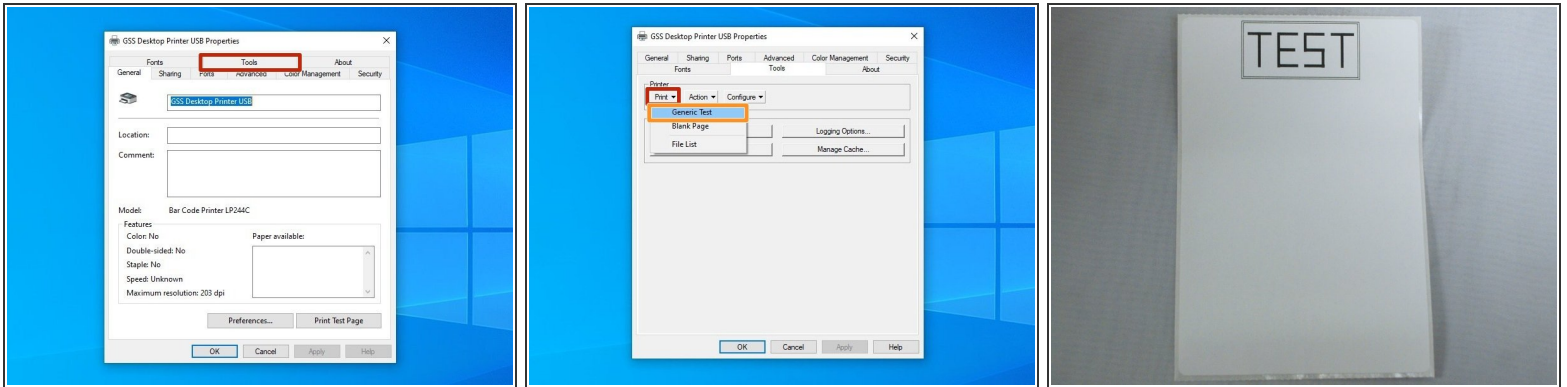
- Check your Printers & Scanners in Windows to verify setup has been completed - you should a printer with a name matching the one you just set up.

## Step 13 — Open Driver Menu



- Open the "Printers & Scanners" window.
- Click on the printer you just set up, and then click "Manage."
- Select "Printer Properties."

## Step 14 — Print Test Page



- At the top of the window, click on the "Tools" tab.
- Click on "Print," and then on "Generic Test."
- The printer should now print a test label, with the word "TEST" printed in a large box (example shown).