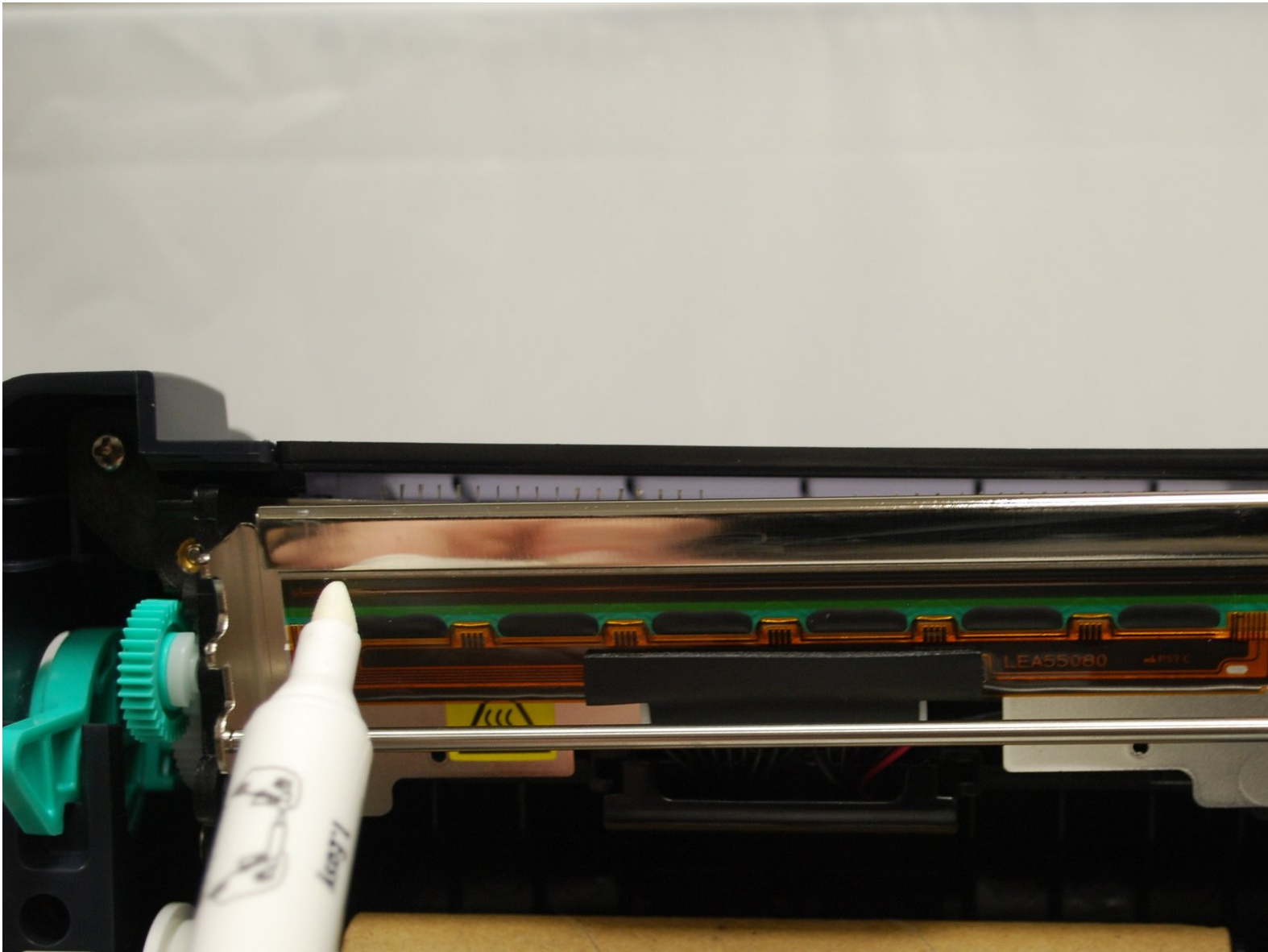




13 - How to Clean the Printhead

Cleaning off the printhead of the GSS desktop printer.

Written By: Eric Sutter



INTRODUCTION

How to clean your GSS Desktop Printer with a cleaning pen.

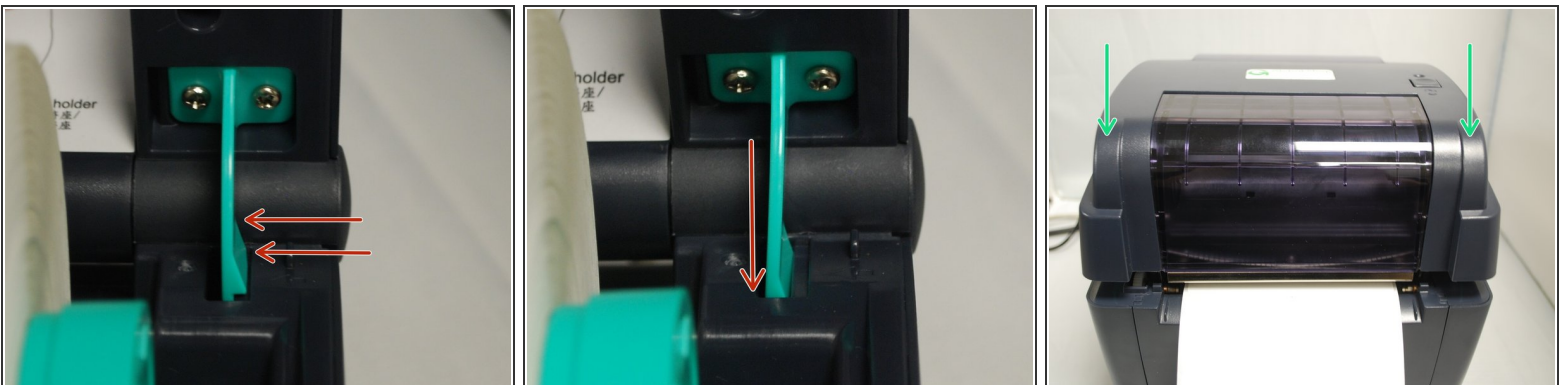
Step 1 — Opening and Cleaning



❗ **Before beginning, make sure the printer is turned off.**

- To release the top cover, use a finger to pull forward (towards the front of the printer) on each of the green release latches, located on either side of the printer. Once released, gently lift the cover until it lock into place.
- Uncap the cleaning pen and use the tip to clean the glass surface for the print head, ensuring there is no label or ribbon residue, or dust or other particulate.
- ☑ You should do this each time you go through a roll of labels to ensure optimal print quality and performance. Doing so regularly can extend the lifespan of your printer by 2 to 3 times.

Step 2 — Closing the Printer



- To close the top cover, find and press in on the locking support tab in the back.
- Gently lower the top cover, and then press down on both front corners firmly.