



## 07 - Attaching Belt Clip

How to attach the belt clip to your GSS Mobile label printer.

Written By: Eric Sutter



## INTRODUCTION

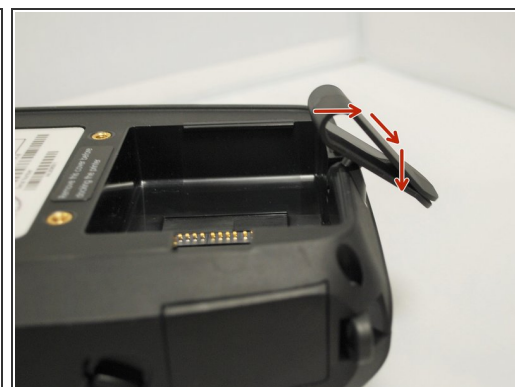
How to attach the belt clip to your GSS Mobile label printer.

## Step 1 — Remove Battery



- Before beginning, make sure the printer is turned off (the screen and indicator LED should be unlit).
- Turn the print over. Use one finger to push the latch inward until the battery unseats, then pull it up and out.

## Step 2 — Insert Clip



- Insert the rounded knob on the clip into the groove.
- Pull the clip forward and down, so that the clip is out of the way of the battery slot.

## Step 3 — Reinsert Battery



- Place the battery back in it's slot, putting in the end without the latch first, then press down firmly on the left side until the latch clicks into place.
- The belt clip should now be held firmly into place.