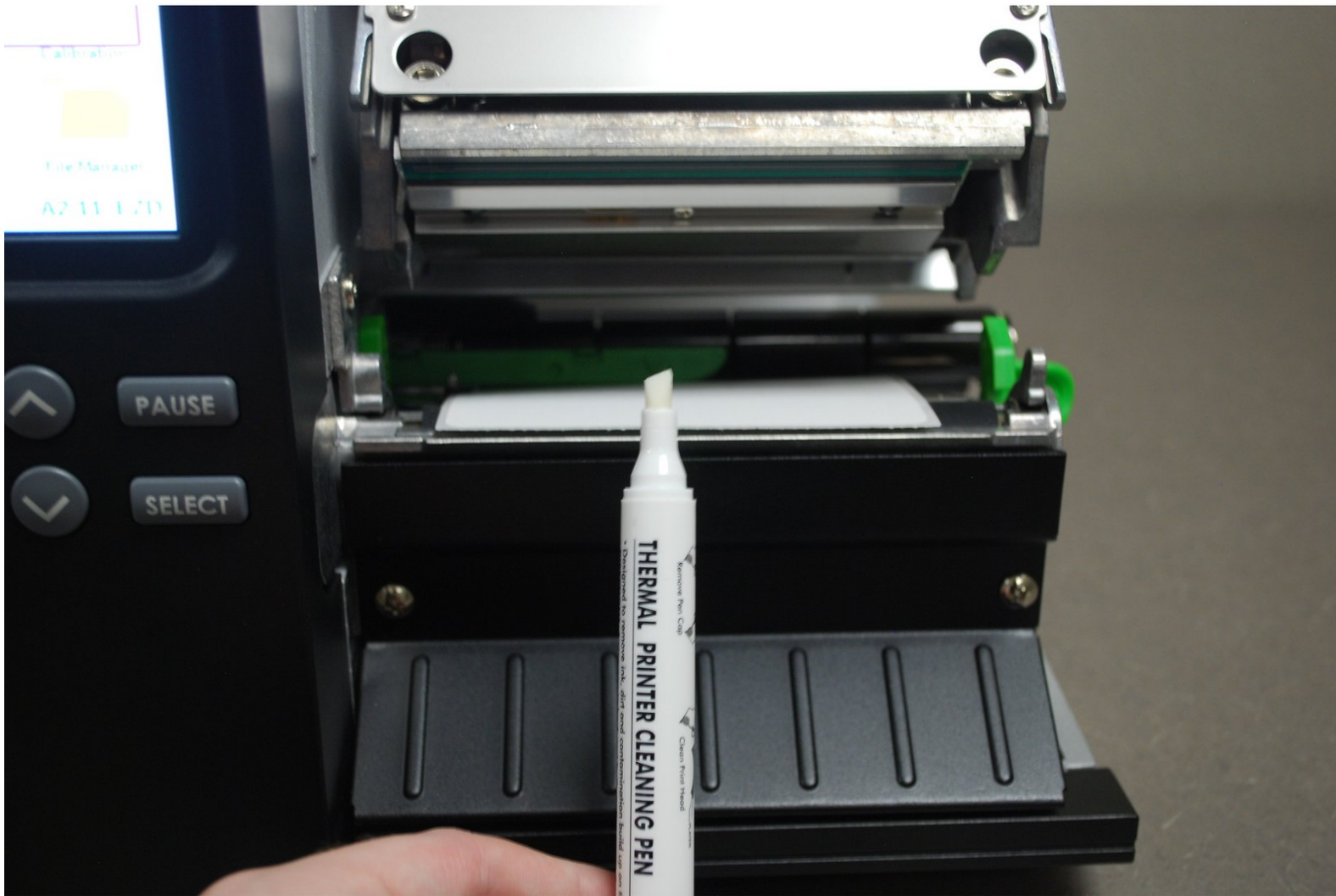




13 - How to Clean Printhead

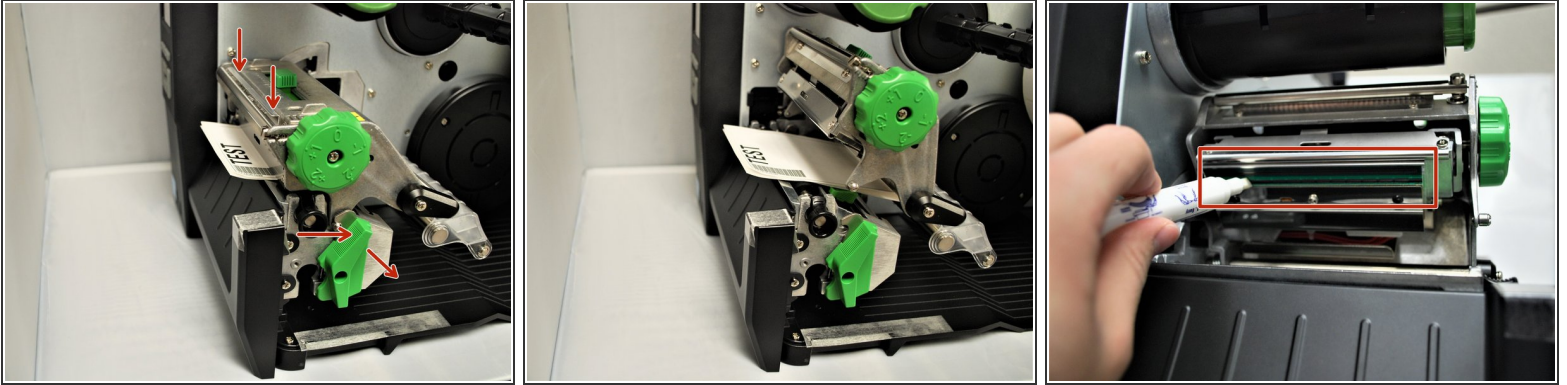
Written By: Eric Sutter



INTRODUCTION

Make sure to turn off the printer before beginning the cleaning process

Step 1 — Cleaning the Print Head



- Make sure the printer is turned off, then open the cover, lifting gently until it rests on top of the printer.
 - With one hand, press down on the top of the printhead.
 - With the other, rotate the green release lever clockwise.
 - Remove your hand from the printhead and the printhead should now be able to be lifted up.
 - Uncap the cleaning pen and use the tip to clean the glass surface of the print head, ensuring there is no label or ribbon residue, or dust or other particulate.
- ① *You should do this each time you go through a roll of labels to ensure optimal print quality and performance. Doing so regularly can extend the lifespan of your printer by 2 to 3 times.*