



# 11 - Adjusting Printer Settings

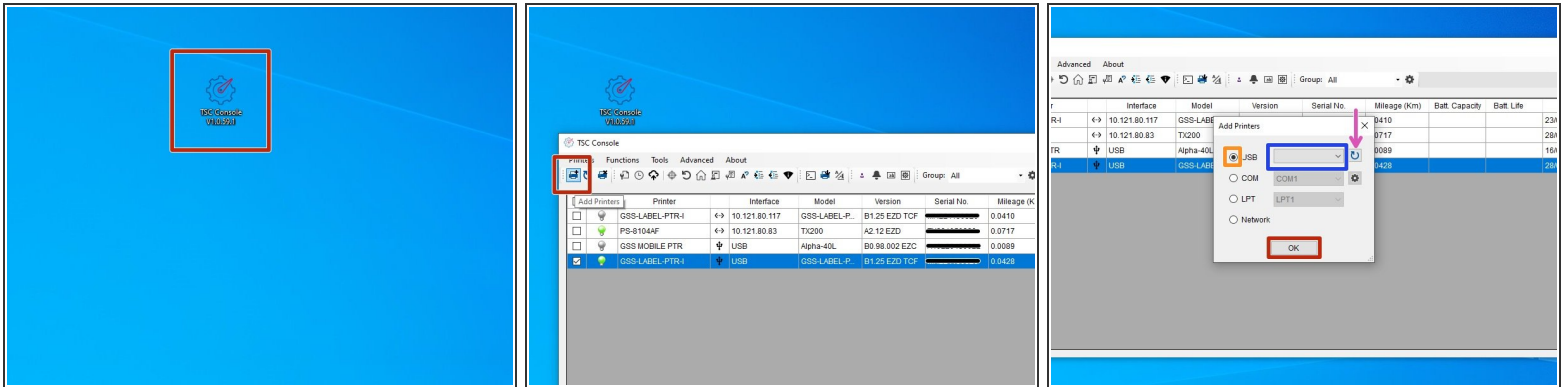
Written By: Eric Sutter



## INTRODUCTION

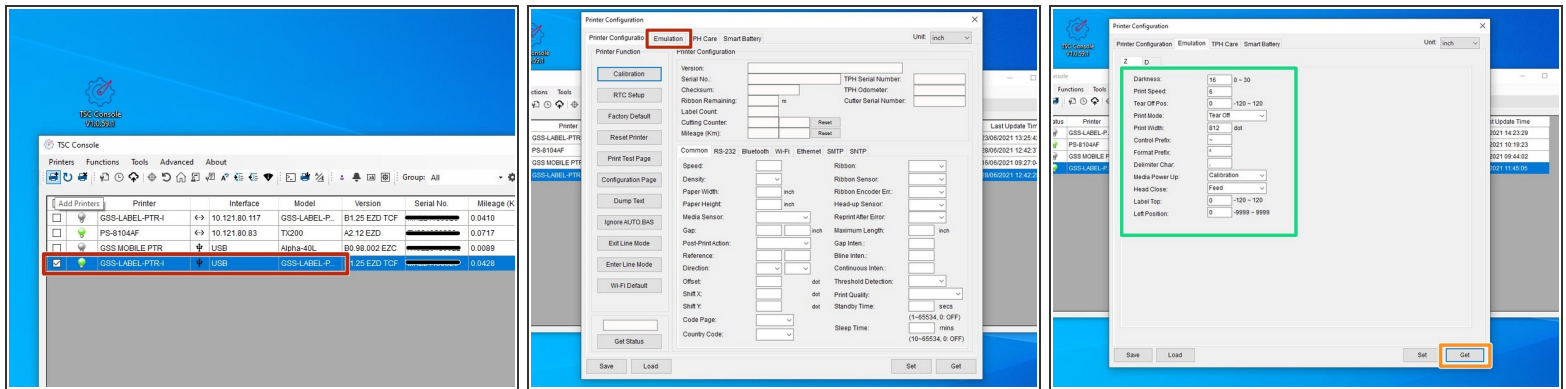
Install the GSS Certified Printer Tool software for this guide [HERE](#).

## Step 1 — Connecting & Initializing



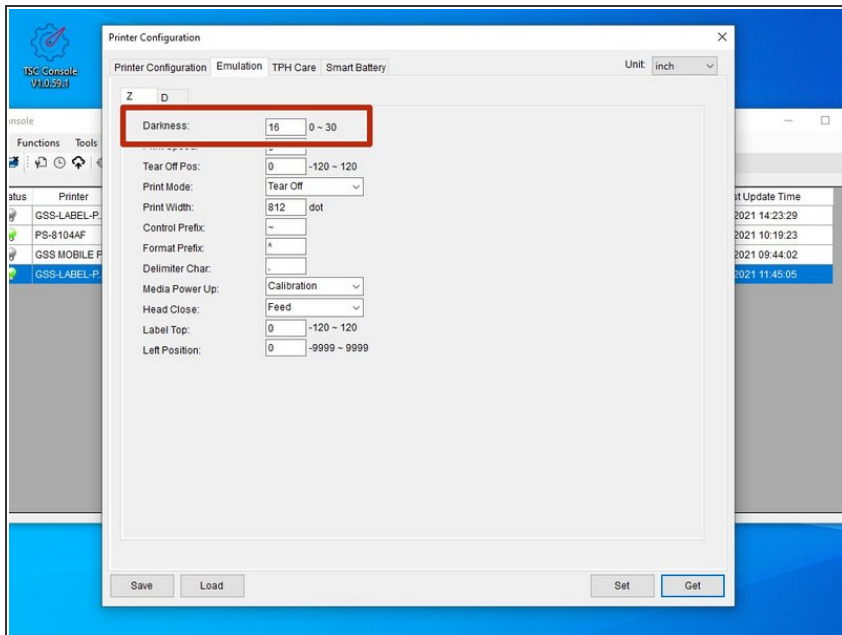
- Make sure the printer is connected via USB before powering the printer on. To see how to connect it via USB click [HERE](#) and to see how to confirm it's connection, click [HERE](#).
- Launch the GSS Certified Printer Tool software.
  - If you do not have it downloaded, download [HERE](#).
- Select "Add Printers" in GSS Certified Printer Tool if your printer is not yet connected. If it is, skip this step.
  - Make sure USB is selected by clicking the bullet point next to 'USB,' shown by the orange box.
  - Select the drop down menu, shown by the blue box, to find and select 'GSS-LABEL-PTR-I'
    - ☑ If it does not show up, try selecting the 'refresh USB list' button shown by the pink arrow. If it still does not appear, try turning off the printer, waiting a moment for it to fully power off, then powering it back on and repeating this step.
  - Select 'OK.'

## Step 2 — Navigating to Adv. Printer Settings



- Double click the printer name, 'GSS-LABEL-PTR-I,' to open up the Printer Configuration Menu.
- In the Printer Configuration Menu select the 'Emulation' tab.
- Click on 'Get' in the bottom right hand of the pop up, shown by the orange box.
- The fields will now populate with information given from the printer, shown by the green box.

## Step 3 — Changing the Darkness



- The Darkness is how dark your printer prints labels.
- The default is preloaded and it is recommended it remains about the same darkness as it came as.
- To change it, click in the text box and enter a number between 0 and 30.
- The closer the number is to 0, the lighter your prints will be.
- The closer the number is to 30, the darker your prints will be.

## Step 4 — Navigating the Menu



- Tap or select the 'Menu' option on the printer screen.
- Tap or select 'Setting.'
- Confirm that the 'Command Set' reads as 'ZPL2.'
  - ☞ If it does not, tap or select it to switch to 'ZPL2.'
- Tap or scroll down and select 'Darkness.'

## Step 5 — Changing the Darkness



- Tap the green arrows on the screen or use the arrow keys below the print screen to adjust the darkness.
- The Darkness is how dark your printer prints labels.
- The default is preloaded and it is recommended it remains about the same darkness as it came as.
- To change it, click in the text box and enter a number between 0 and 30.
  - The closer the number is to 0, the lighter your prints will be.
  - The closer the number is to 30, the darker your prints will be.