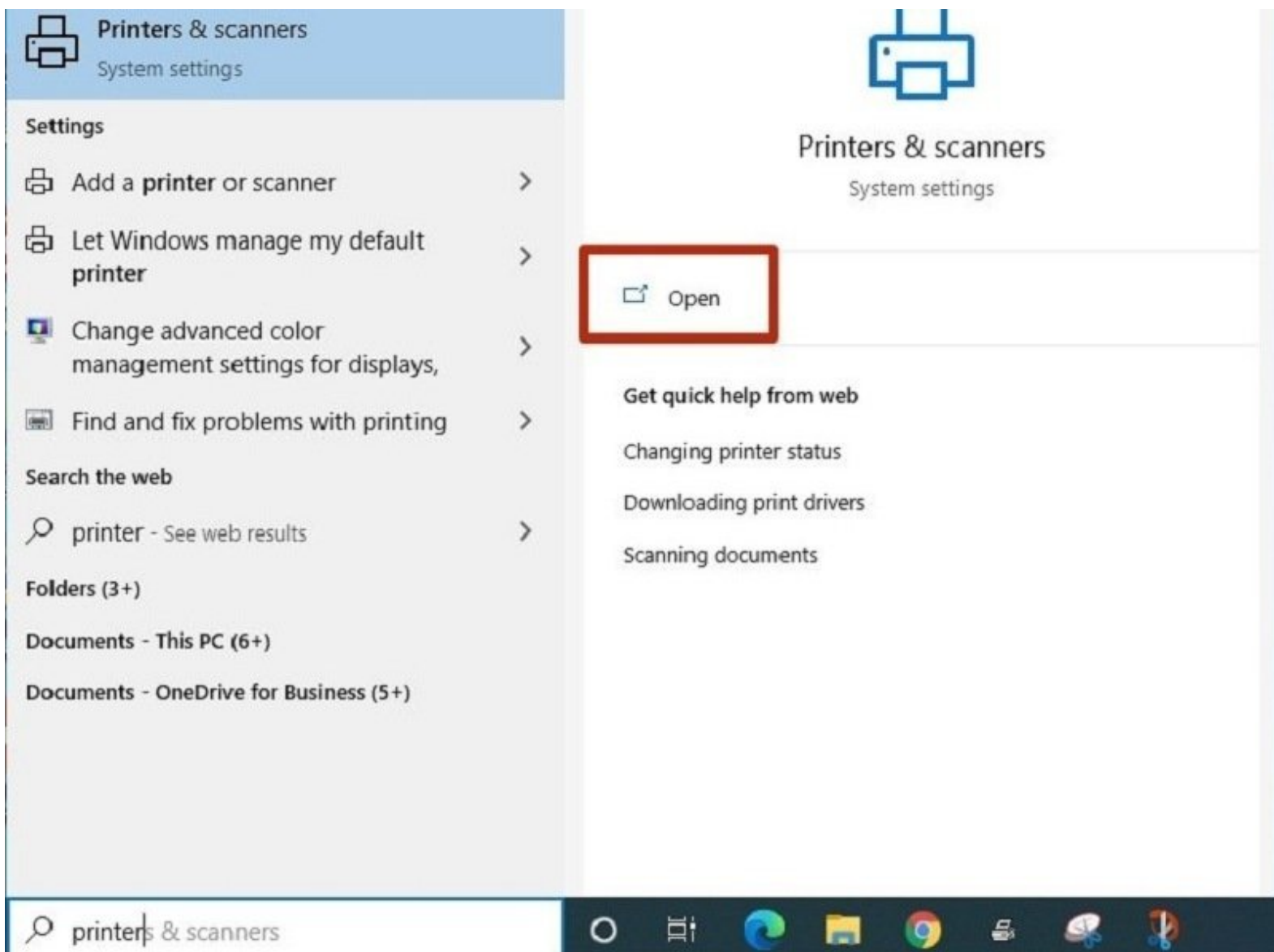


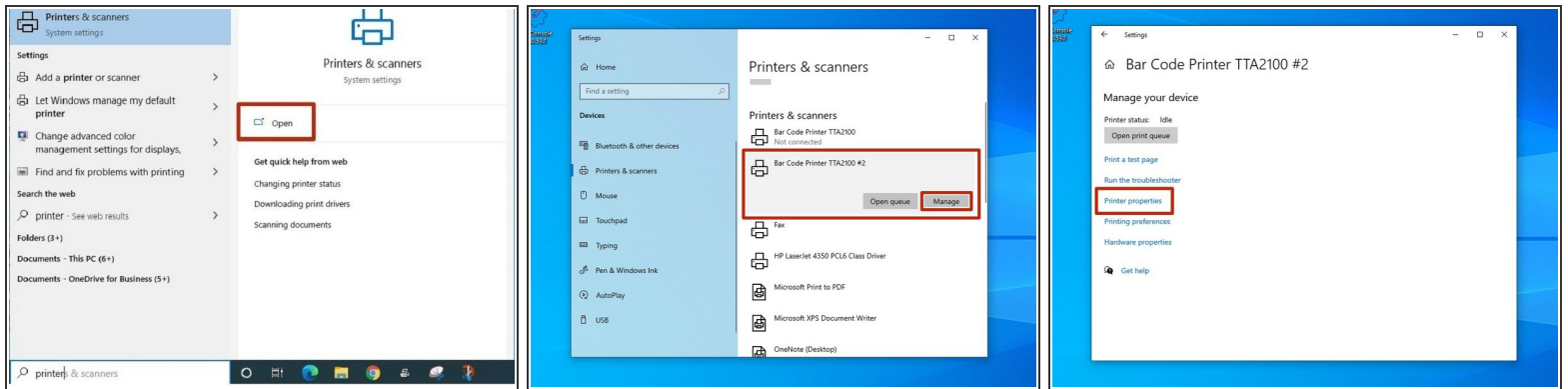


# 12 - Printing Test & Configuration Pages

Written By: Eric Sutter

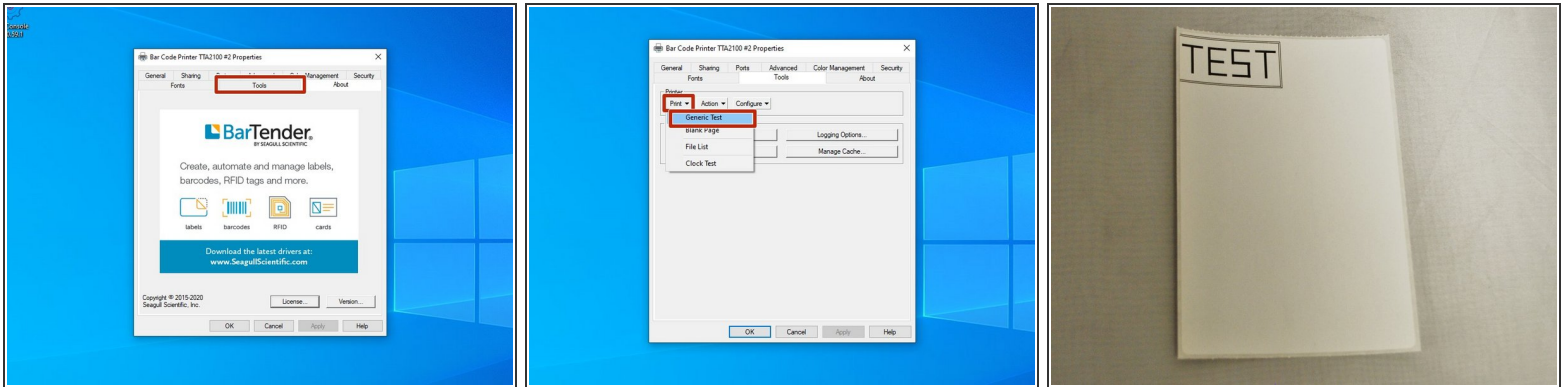


## Step 1 — Open driver options for the printer



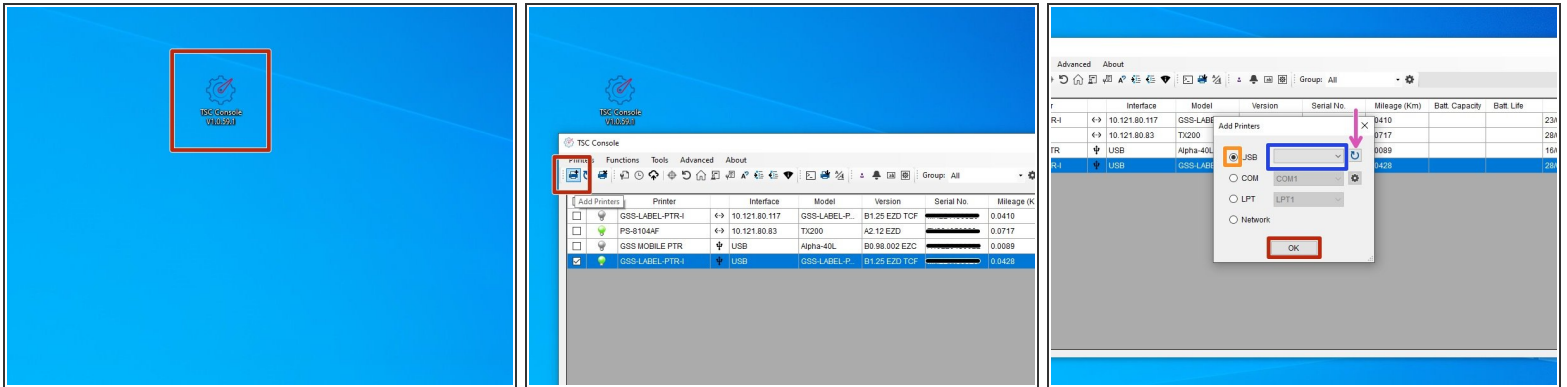
- Search for printers and scanners in the taskbar search bar.
- Confirm that the selection looks like the first picture, and hit "Open."
- Click on the printer you set up in the previous guides.
- In this case, I named the printer "Bar Code Printer TTA2100 #2."
- Select the "Manage" option.
- Select the "Printer Properties" option.

## Step 2 — Print Test Page from Printer Driver



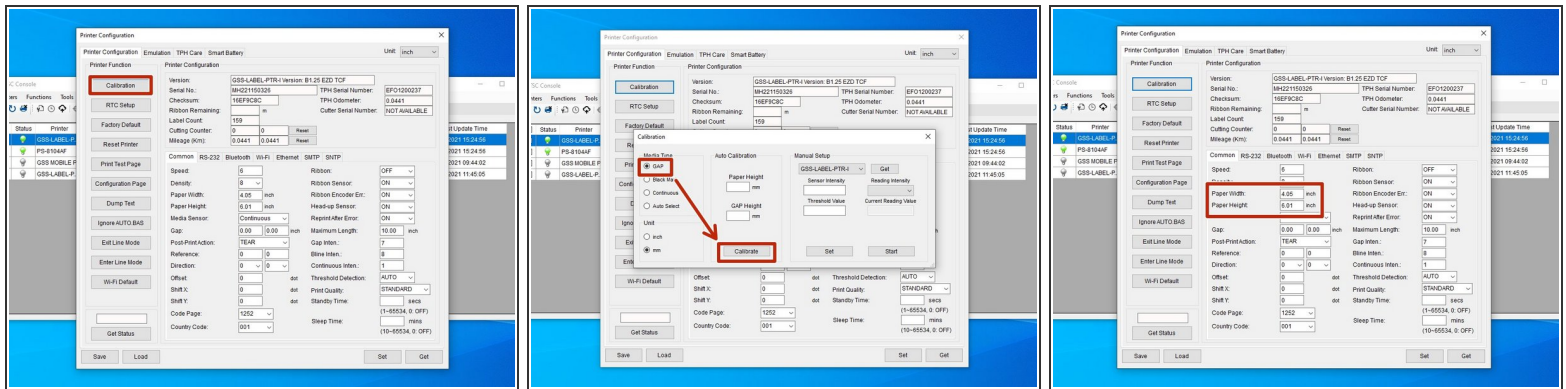
- Select the "Tools" tab at the top of the new window.
  - Click on the drop-down menu labeled "Print" in the "Printer" section.
  - Select "Generic Test" from the list of options.
  - This should print a test label, which should look like the example image.
- ❗ *If no page printed, check that the roll of labels is loaded correctly, and that the correct printing options are selected.*

## Step 3 — Connecting & Initializing



- Make sure the printer is connected via USB or Ethernet before powering the printer on. To see how to connect it via USB or Ethernet click [HERE](#) and to see how to confirm it's connection, click [HERE](#).
- Launch the GSS Certified Printer Tool software.
  - Click [HERE](#) to download it if you have not already.
- Select "Add Printers" in GSS Certified Printer Tool if your printer is not yet connected.
  - Make sure USB is selected by clicking the bullet point next to 'USB,' shown by the orange box.
  - Select the drop down menu, shown by the blue box, to find and select 'GSS-LABEL-PTR-I'
    - ☐ *If it does not show up, try selecting the 'refresh USB list' button shown by the pink arrow. If it still does not appear, try turning off the printer, waiting a moment for it to fully power off, then powering it back on and repeating this step.*
  - Select 'OK.'

## Step 4 — Calibration



- Once you have the printer selected, we'll calibrate it to make sure the settings are correct.
  - Select the "Calibration" option at the top left. This will open a new window.
  - In the new window, make sure the "GAP" option is selected, and then hit the "Calibrate" button.
  - The printer will print several blank labels to calibrate. When it is done, hit the "Get" button in the lower right of the first window to update the fields.
  - After the fields stop populating, verify that the fields under "Printer Configuration" match your setup.
- For example, my printer is setup with 4 in. x 6 in. labels, so I make sure that the paper width and height are correct (within a few hundredths on a inch is good).*

## Step 5 — Print Test & Configuration Pages via GSS Certified Printer Tool



- Select the "Print Test Page" option. This will print a test page from the printer.
- Once it's done printing, select the "Configuration Page." This will print a few pages of configuration settings.
- Once the printer is done printing, verify that the pages look like the example images.