

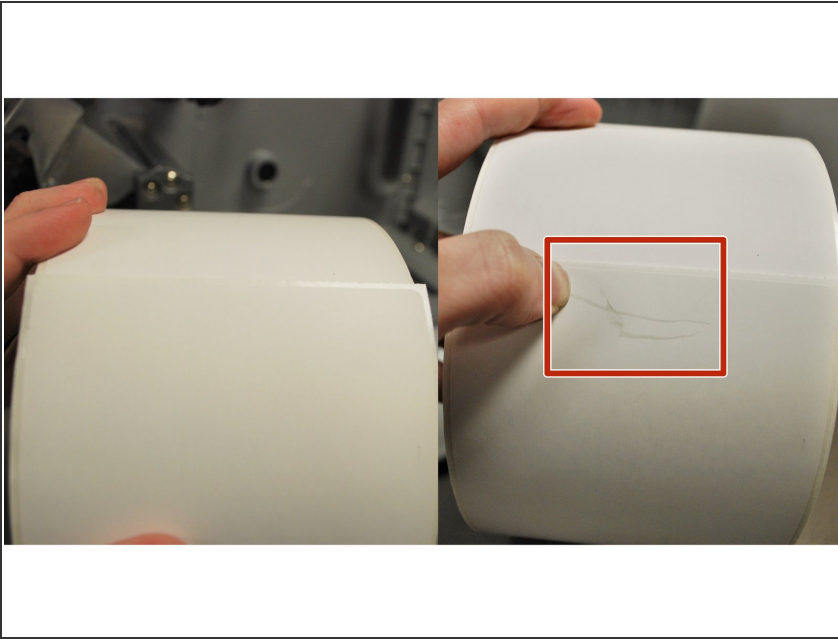


03 - Load Direct Thermal Labels (When Not Using Ribbon)

Written By: Eric Sutter

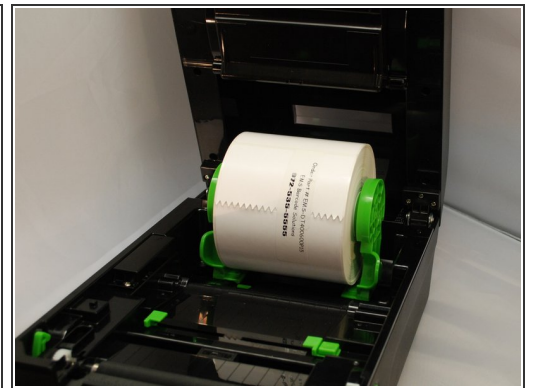
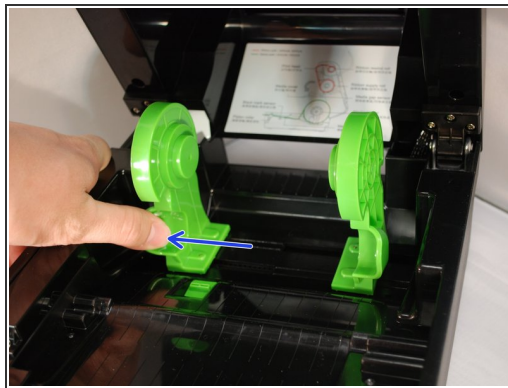


Step 1 — Identifying your Labels



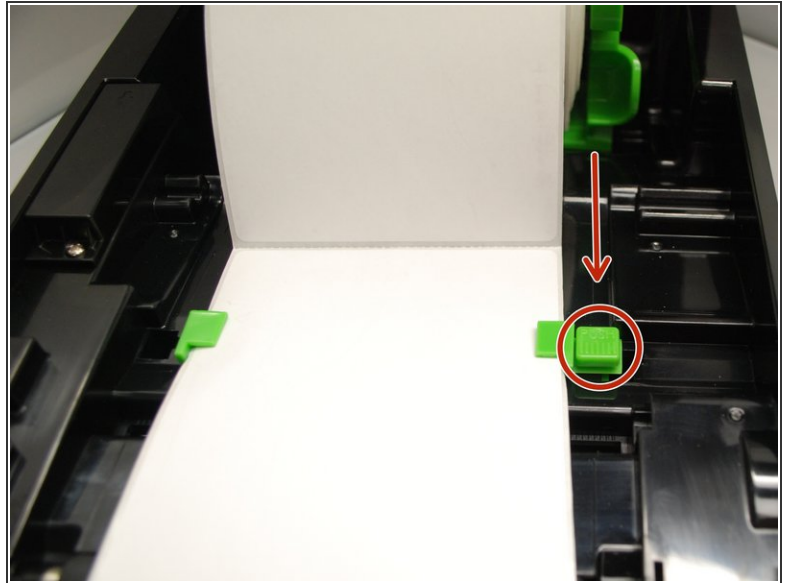
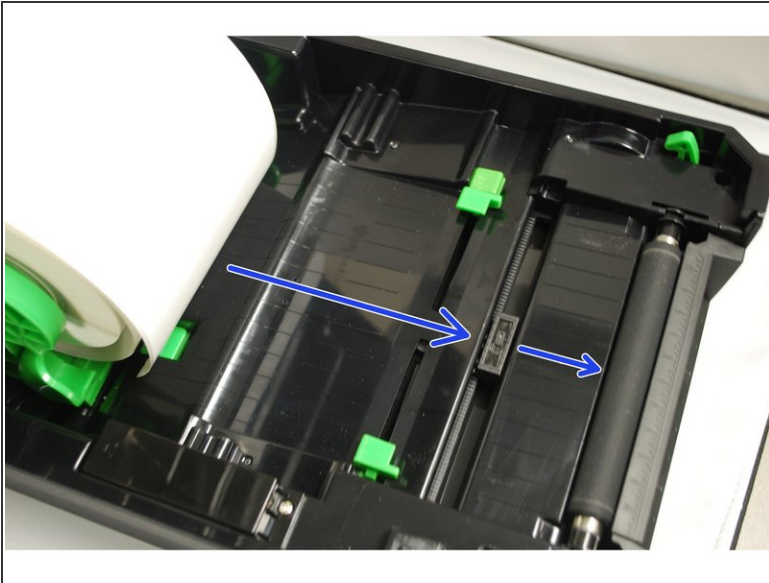
- Direct transfer labels will show a grey mark if you scrape your thumbnail along it, while thermal transfer will not. Make sure the labels you are using are of the Direct Thermal variety.

Step 2 — Opening and Prepping Printer



- Make sure the printer is turned off before beginning.
- Open the printer's top cover by using a finger to pull forward (towards the front of the printer) on each of the green releases latches, located on either side of the printer. Lift the top cover until fully opened.
- Separate and hold open the green media holders.
- Place the roll between the holders and close them onto the core, making sure that the sheet unrolls from the top of the roll.

Step 3 — Preparing Labels to Print



- Place the paper, printing side face up, over the media sensor and place the label leading edge onto the platen roller (the rubberized roller near the front of the printer).
 - Move the media guides (the small green tabs) to fit the label width by pushing the media guide adjustment button.
 - Close the top cover gently.
- ① See the *"Printing Test and Configuration Pages"* guide for information on calibrating the printer.