

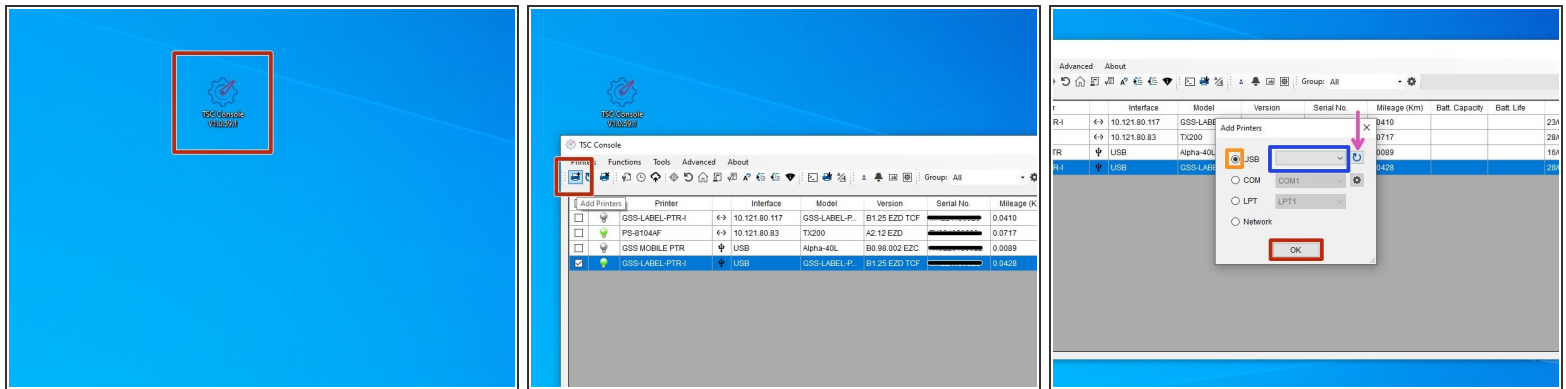


15 - Turning on Thermal Transfer

Written By: Eric Sutter

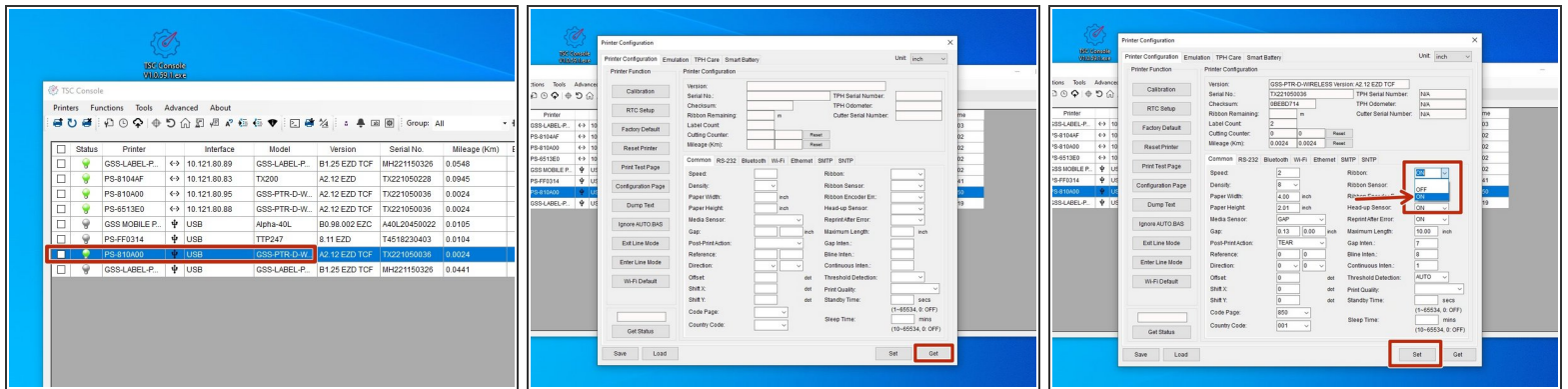


Step 1 — Connecting & Initializing



- Make sure the printer is connected via USB before powering the printer on. To see how to connect it via USB click [HERE](#) and to see how to confirm it's connection, click [HERE](#).
- Launch the GSS Certified Printer Tool software.
 - ✦ If you do not have it downloaded, download [HERE](#).
- Select "Add Printers" in GSS Certified Printer Tool if your printer is not yet connected. If you already have it connected, you can skip this step.
- Make sure USB is selected by clicking the bullet point next to 'USB,' shown by the orange box.
- Select the drop down menu, shown by the blue box, to find and select 'GSS-LABEL-PTR-I'
 - ✦ If it does not show up, try selecting the 'refresh USB list' button shown by the pink arrow. If it still does not appear, try turning off the printer, waiting a moment for it to fully power off, then powering it back on and repeating this step.
- Select 'OK.'

Step 2 — Turning on Thermal Transfer



- Double click the printer name, 'GSS-LABEL-PTR-I,' to open up the Printer Configuration Menu.
- In the Printer Configuration Menu select 'Get.'
- If the 'Ribbon' option is set to 'OFF,' click it and change it to 'ON'
- Click 'Set' to apply changes.