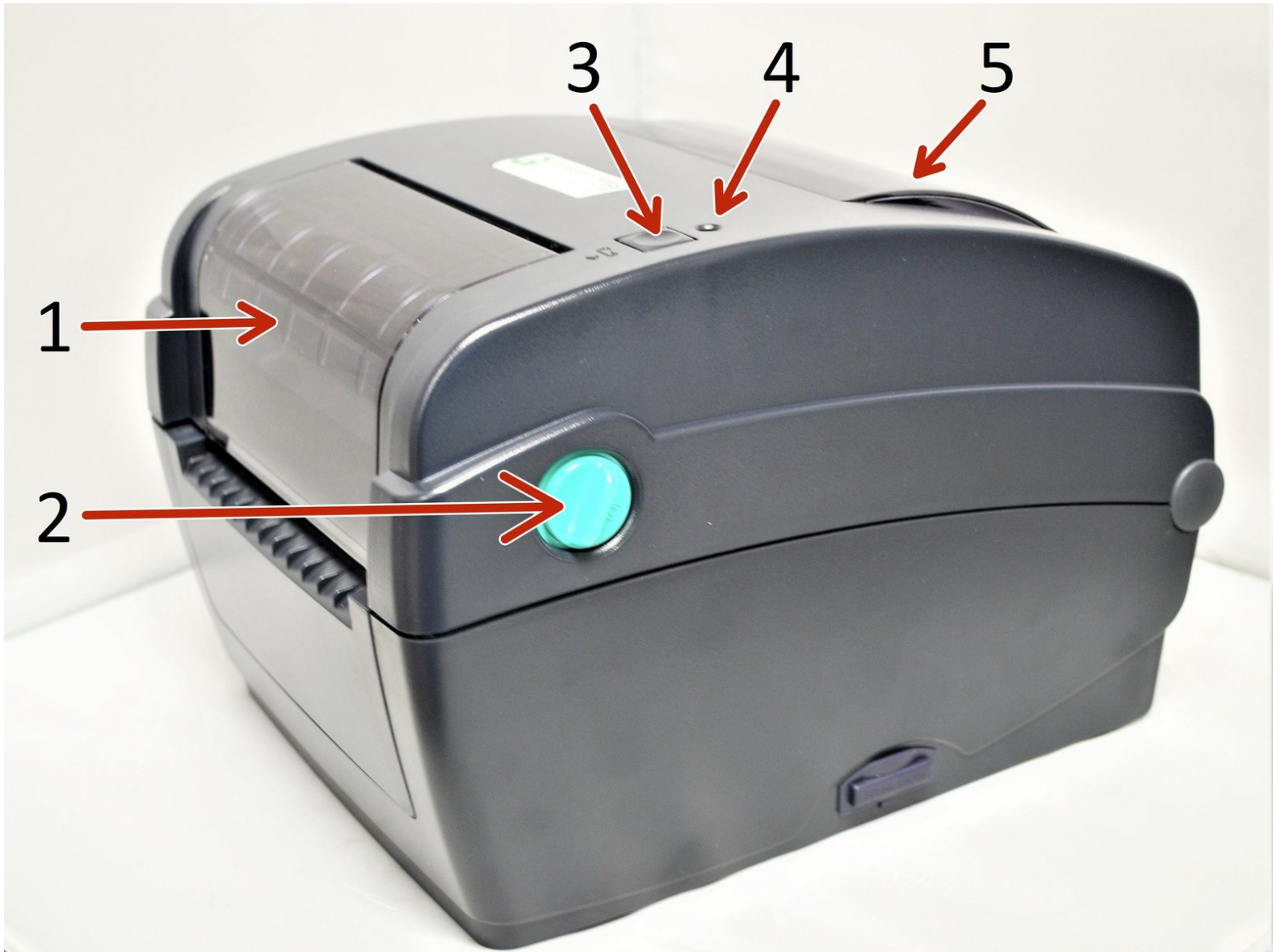


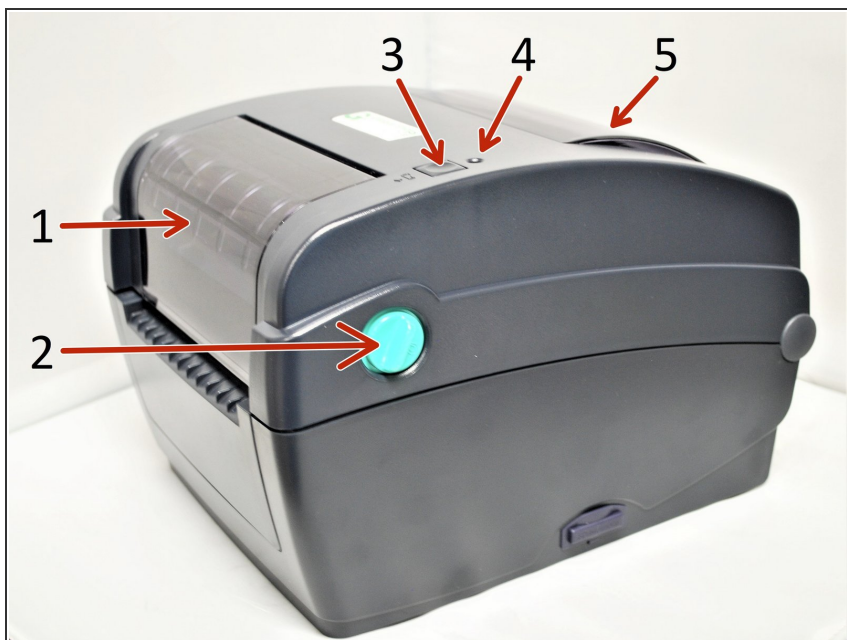


02 - Identifying Internal Printer Parts

Written By: Eric Sutter

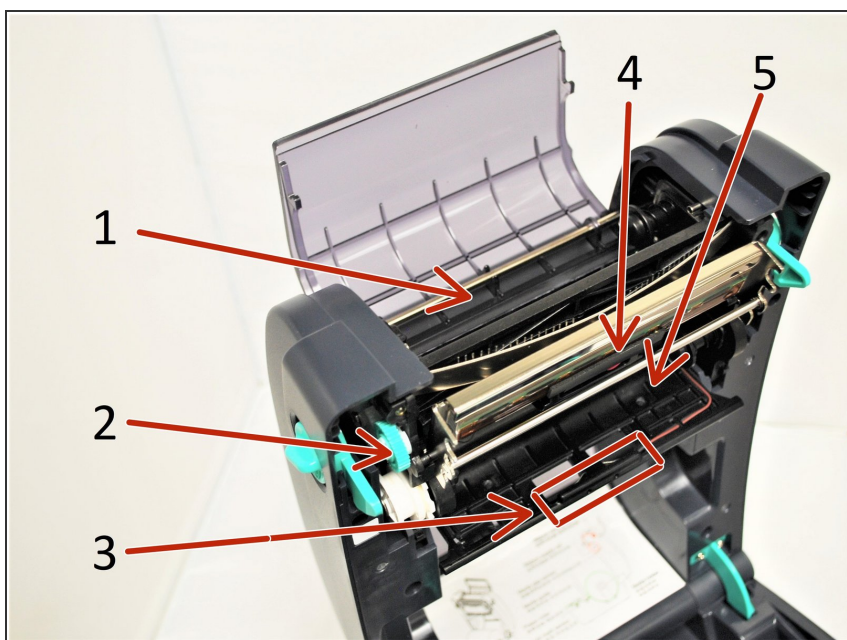


Step 1 — Identifying External Printer Parts



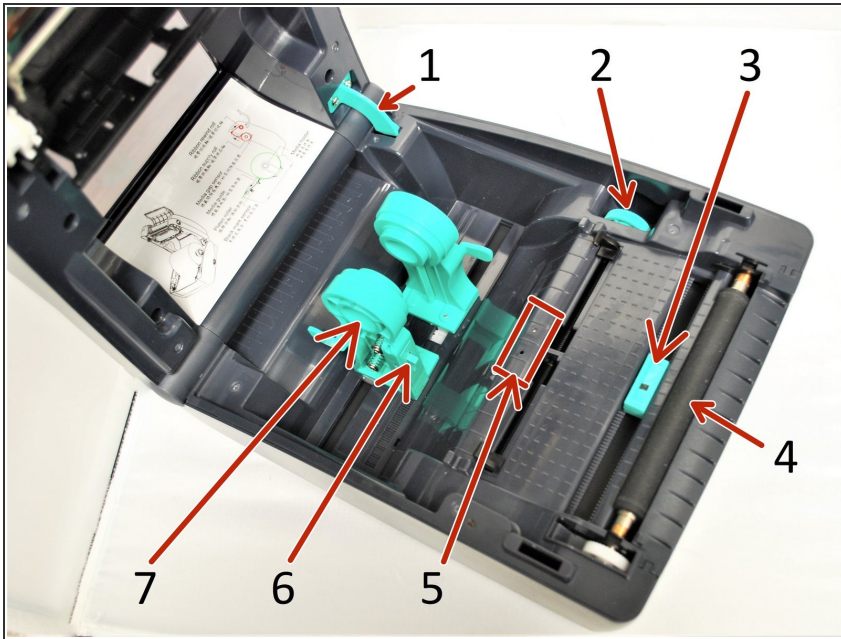
- 1. Ribbon Access Cover
- 2. Top Cover Open Lever
- 3. Feed Button
- 4. LED Indicator
- 5. Media View Window

Step 2 — Identifying Internal Printer Parts Pt.2



- 1. Ribbon Rewind Hub
- 2. Ribbon Rewind Gear
- 3. Gap Sensor (receiver)
- 4. Printhead
- 5. Ribbon Supply Hub

Step 3 — Identifying Internal Printer Parts Pt.1



- 1. Top Cover Support
- 2. Media Guide Adjustment Knob
- 3. Black Mark Sensor
- 4. Platen Roller
- 5. Gap Sensor (transmitter)
- 6. Media Holder Lock Switch
- 7. Media Holder