



## 3- GSS MOBILE 2 Memory Management

Learning how to manage the internal memory and learning how to install and use external memory.

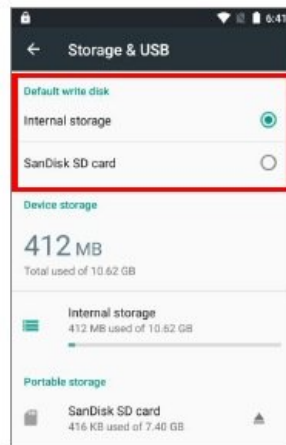
Written By: Emilio Vallejos

To your Android device, the SD card can serve as an extension of your device's internal storage (which comes as 16 GB of flash memory to store the OS, applications and files) other than a portable storage place.

Tap **All Apps**  | **Settings**  | **Storage & USB**  to check usage of the internal and external storage spaces.

### CHOOSE DEFAULT STORAGE

By default, all the videos, photos and downloaded files are directly saved to the device's internal storage. If you have previously inserted and mounted an SD card as portable storage, this external storage will appear selectable below the option **Internal Storage**, and you can choose it as the **Default write disk**.



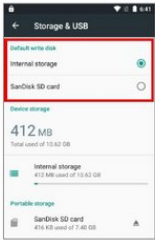
## Step 1 — Choosing Default Storage

To your Android device, the SD card can serve as an extension of your device's internal storage (which comes as 16 GB of flash memory to store the OS, applications and files) other than a portable storage place.

Tap **All Apps** | **Settings** | **Storage & USB** to check usage of the internal and external storage spaces.

**CHOOSE DEFAULT STORAGE**

By default, all the videos, photos and downloaded files are directly saved to the device's internal storage. If you have previously inserted and mounted an SD card as portable storage, this external storage will appear selectable below the option **Internal Storage**, and you can choose it as the **Default write disk**.



● Insert wisdom here.

## Step 2 — Setting Up SD Card

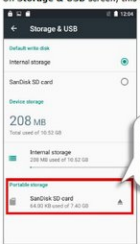
**SET UP SD CARD AS PORTABLE STORAGE**

Using SD card as a portable device allows you to treat it as a USB disk, by swapping it between your Android device and the computer to easily transfer files. This is quite handy when there is a need to offload files that are taking up too much storage space.

When this device is connected with PC, the disk content is readable from PC client:



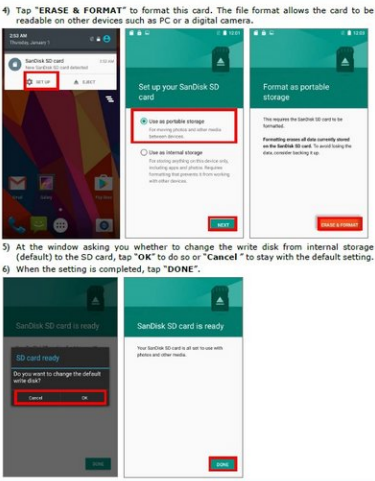
On **Storage & USB** screen, this disk can be managed separately.



The SD card is considered a separate storage, the capacity of which is not included in total device storage. You can tap **A** to select a mounted SD card.

To start:

- 1) Connect your mobile computer with PC with supplied USB cable, swipe down from the status bar to reveal **Notifications Drawer**, tap **USB for Charging** to enter USB options and then choose **File transfers**.
- 2) Insert the SD card. A notification will pop up indicating that an SD card is detected tap **"SET UP"**.
- 3) Tap **"Use as portable storage"** and then **"NEXT"**.



4) Tap **"ERASE & FORMAT"** to format this card. The file format allows the card to be readable on other devices such as PC or a digital camera.

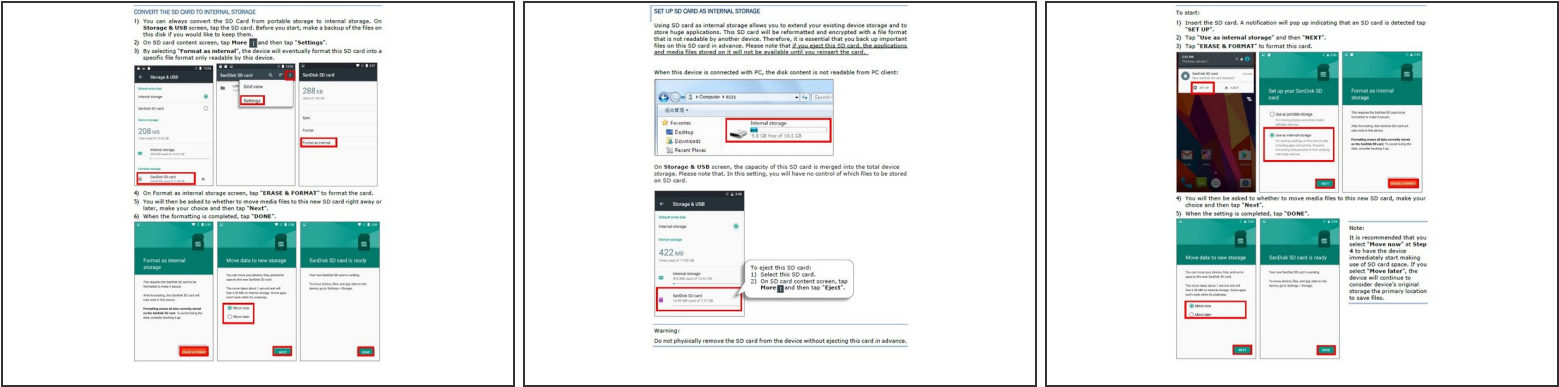
5) At the window asking you whether to change the write disk from internal storage (default) to the SD card, tap **"OK"** to do so or **"Cancel"** to stay with the default setting.

6) When the setting is completed, tap **"DONE"**.

Note:  
Please make sure the USB cable is properly connected while transferring files over USB connection.

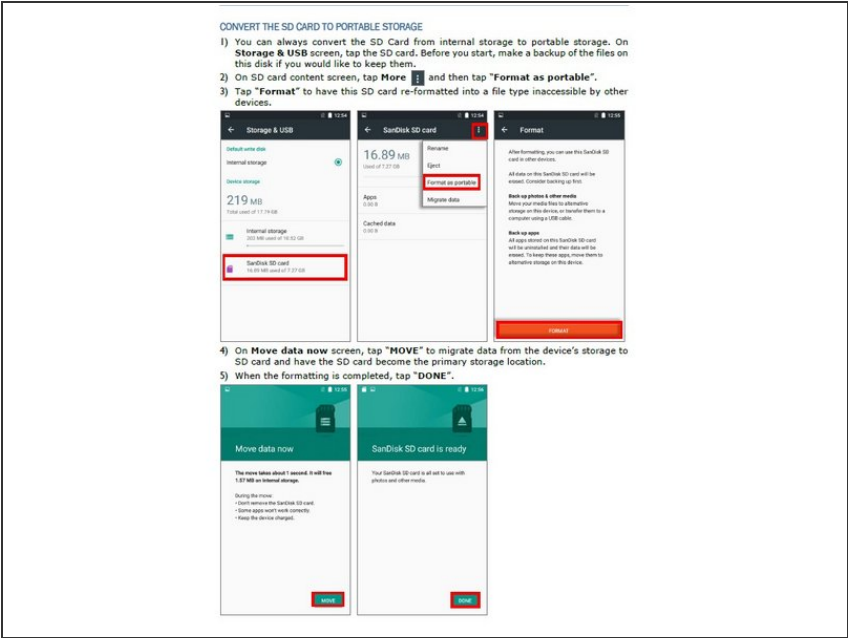
● Insert wisdom here.

## Step 3 — Converting SD Card to Internal Memory



- Insert wisdom here.

## Step 4 — Converting the SD Card to Portable Storage



- Insert wisdom here.