



09.1. Wireless Settings

How to connect to a Wi-Fi Network, Manually Add Wifi Network

Written By: Ian Savitch

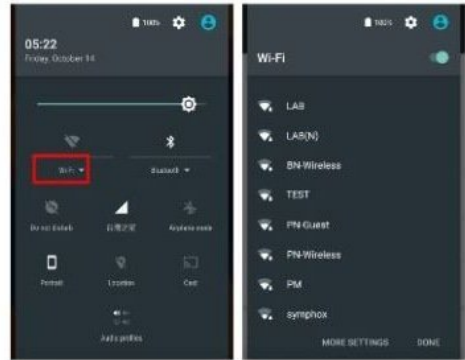
RS50 Mobile Computer

4.2. USE WIRELESS LOCAL AREA NETWORK (WI-FI)

4.2.1. CONNECT TO WI-FI NETWORK

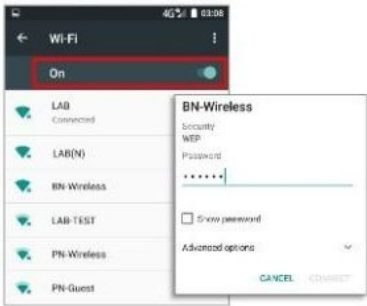
To power on Wi-Fi:

- 1) Use two fingers to swipe down from the top of the screen to open **Quick Settings**.
- 2) Tap **Wi-Fi** to scan for available networks. Select a network to connect.



OR

- 1) Tap **All Apps** | **Settings** | **Wi-Fi**.
- 2) Tap the Wi-Fi switch to scan for available networks. Select a network to connect. If the network is an open one, the mobile computer will attempt to connect to it directly. When connected, the status will change to show **Connected**. If the network is a secured one, the mobile computer prompts a dialog to enter the password for the connection.



Step 1 — Connect to WiFi Network - Pt 1

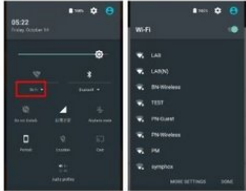
RS50 Mobile Computer

4.2. USE WIRELESS LOCAL AREA NETWORK (Wi-Fi)

4.2.1. CONNECT TO WIFI NETWORK


To power on Wi-Fi:

- 1) Use two fingers to swipe down from the top of the screen to open **Quick Settings**.
- 2) Tap **Wi-Fi** to scan for available networks. Select a network to connect.



OR

- 1) Tap **All Apps** | **Settings** | **Wi-Fi**.
- 2) Tap the Wi-Fi switch to scan for available networks. Select a network to connect. If the network is an open one, the mobile computer will attempt to connect to it directly. When connected, the status will change to show **Connected**. If the network is a secured one, the mobile computer prompts a dialog to enter the password for the connection.



● Insert wisdom here.

Step 2 — Manually Add WiFi Network

4.2.2. MANUALLY ADD Wi-Fi NETWORK

If the network you would like to connect to does not broadcast its SSID, or if the network is out of range, you may add it manually.

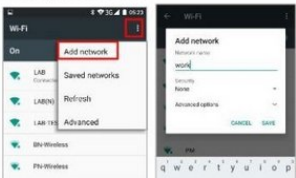
- 1) Tap **All Apps** | **Settings** | **Wi-Fi**.
- 2) Tap the Wi-Fi switch to enable this function, and then tap **More** and select **Add network**.
- 3) In the dialog box, enter the name of the network in the **Network name** field, and select a security method in the **Security** field (None, WEP, WPA/WPA2 PSK, 802.1x EAP).
- For WEP/WPA/WPA2 PSK connections: Enter the required password and tap **Save**.
- For 802.1x EAP connections: Tap **Advanced options** and select the **EAP method** in the drop-down box (PEAP, TLS, TTLS, PWD, SIM, AKA), and the **Phase 2 authentication** in the drop-down box (None, MSCHAPV2, GTC). Select a **CA certificate** and **User certificate** if required (certificates may be installed under **All Apps** | **Settings** | **Security** | **Install from SD card**).

or **All Apps** | **Settings** | **Wi-Fi** | **More** | **Advanced** | **Install certificates**.) Enter your username in the **Identity** box and the password in the **Password** box if required.

The mobile computer supports the following certificate file extensions:

File Extension Type	Standard Certificate	Key Stored
Description	DER-encoded X.509 certificates saved in .crt or .cer files.	X.509 certificates saved in PKCS#12 key store files with a .p12 or .pfx extension.
How to install	change the extension to .crt or .cer.	Change the extension to .p12 or .pfx.

- 4) If necessary, select the **Proxy** server and **IPv4** settings. By default, no proxy is set and IP settings are set to **DHCP**.



● Insert wisdom here.

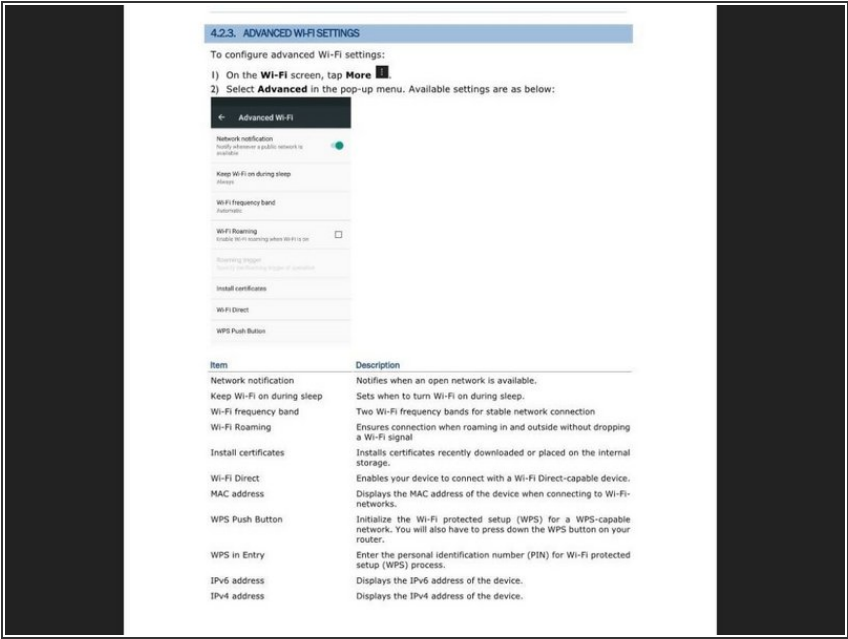
This document was generated on 2024-05-18 01:08:21 PM (MST).

© 2024

emsbarcode.dozuki.com/

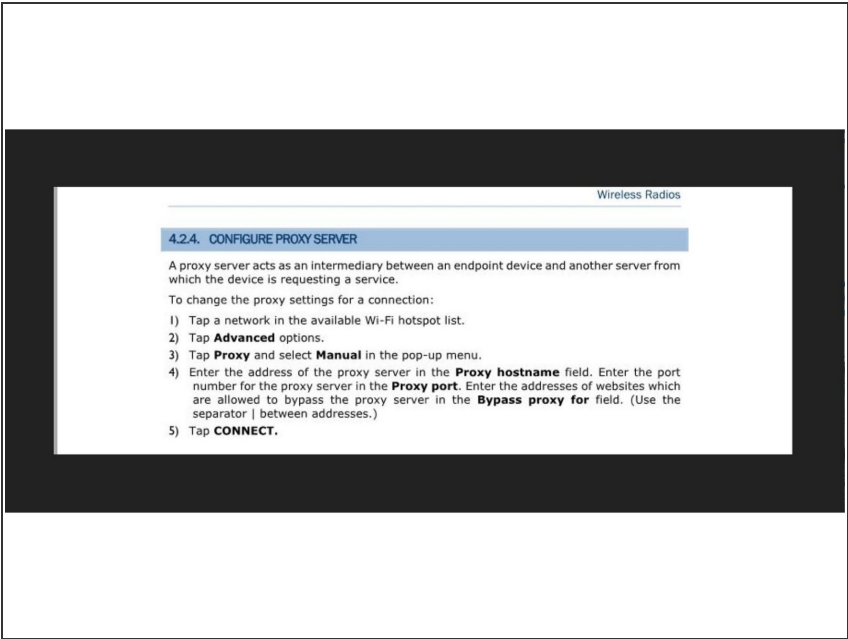
Page 2 of 4

Step 3 — Advanced WiFi Settings



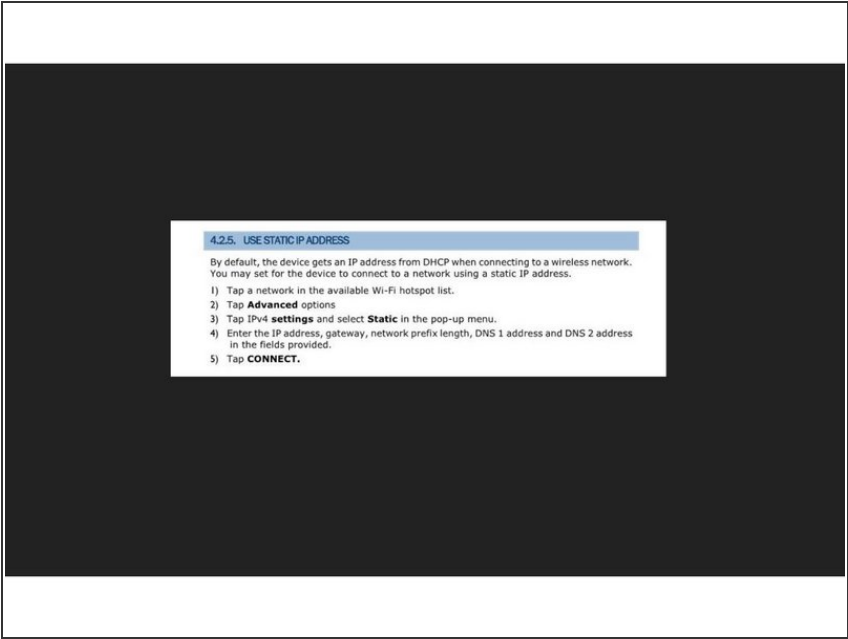
● Insert wisdom here.

Step 4 — Configure Proxy Server



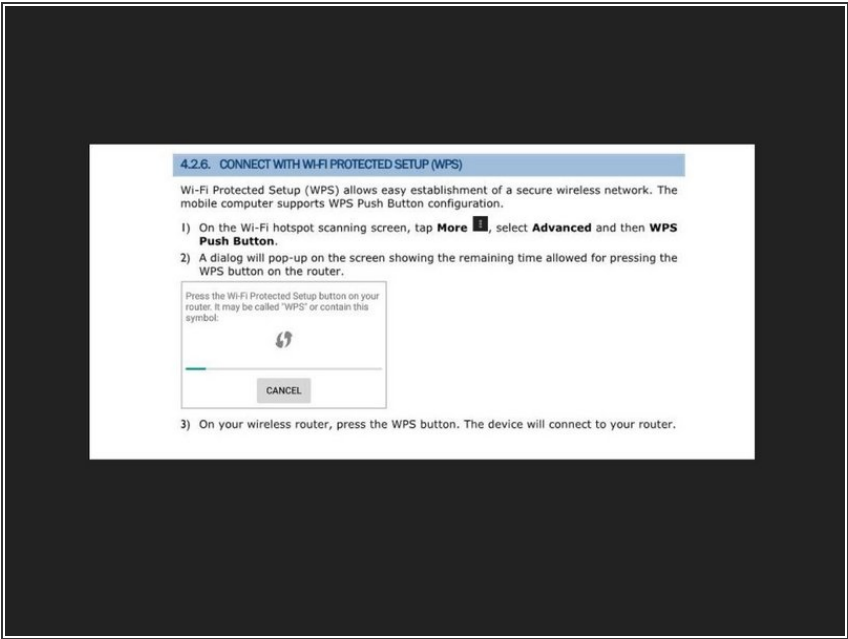
● Insert wisdom here.

Step 5 — Use Static IP Address



- Insert wisdom here.

Step 6 — Connect with Wifi Protected Setup (WPS)



- Insert wisdom here.